

# BillQuick Outlook Add-In Getting Started Guide 2016

# CONTENTS

<b>INTRODUCTION</b>	<b>1</b>
BILLQUICK OUTLOOK ADD-IN SETUP CHECKLIST	2
<b>SYSTEM REQUIREMENTS</b>	<b>2</b>
HARDWARE REQUIREMENTS	2
SOFTWARE REQUIREMENTS	3
<b>INSTALLATION</b>	<b>3</b>
INSTALLING ON A COMPUTER SYSTEM	4
INSTALLING IN A NETWORK ENVIRONMENT	5
UPGRADING FROM A PREVIOUS VERSION	7
<b>START-UP</b>	<b>7</b>
CONNECTING TO BILLQUICK DATABASE	8
ACTIVATING PRODUCT	8
EVALUATING BILLQUICK OUTLOOK ADD-IN	9
LICENSING AND REGISTERING	10
<b>OUTLOOK ADD-IN BASICS</b>	<b>11</b>
STARTING UP	11
LOGGING IN	11
NAVIGATING	12
<b>WORKING</b>	<b>12</b>
SENDING APPOINTMENTS	13
SENDING TASKS	15
SENDING CONTACTS	17
SENDING EMAILS	18

# INTRODUCTION

Welcome to BillQuick® Outlook Add-In from **BQE Software!**

BillQuick Outlook Add-In is a BillQuick module embedded into Microsoft Outlook. It converts your Microsoft Outlook appointments, tasks, and emails into time records, thus quickly completing your Time Card. The time entry is immediately available for review, reporting and billing. Outlook Add-In eliminates duplicate entry, saving time and effort tracking accurate and complete hours. It comes with a Smart Match feature that intelligently matches your Outlook entries to the BillQuick field data based on the past patterns. It is all done in real time, right from your Outlook program...simple, quick, and easy!

The goal of this **BillQuick Outlook Add-In Getting Started Guide** is to help you get started and become comfortable interacting with the Outlook Add-In program. It explains the concepts and procedures involved in setting up of Outlook Add-In, focusing on its installation, activation, registration, basic and main functionalities such as converting appointments and tasks into BillQuick data. Thus, this Guide enables you to educate yourself quickly on how to run and utilize Outlook Add-In effectively and efficiently. It also explains some troubleshooting issues at the end, highlighting your most often encountered problems or queries.



BillQuick Outlook Add-In Getting Started Guide is not a complete training solution. It is a guided tour designed to set up and familiarize you with Outlook Add-In. After completing the guide, we recommend that you explore the **BillQuick Outlook Add-In Help**. Based on your preferred learning style and available time, you can choose self-learning or guided learning. Guided learning utilizes role-based and custom training courses. *Check out [Services](#) for more.*

## BillQuick Outlook Add-In Setup Checklist

	Task	Resources and References
Pre-Installation	Check our <a href="#">system requirements</a>	<a href="#">Software Requirements</a> <a href="#">Hardware Requirements</a>
	Download BillQuick Outlook Add-In setup	<a href="#">Support Downloads</a>
<a href="#">Installation</a>	Install BillQuick Outlook Add-In	<a href="#">Installation on a Computer System</a> <a href="#">Installation in a Network Environment</a> <a href="#">Upgrade From a Previous Version</a>
	Start BillQuick Outlook Add-In 2016	<a href="#">Start BillQuick Outlook Add-In</a>
<a href="#">Start-Up</a>	Create or open your company file	<a href="#">BillQuick Database</a>
	Log into BillQuick Outlook Add-In	<a href="#">Login</a>
	Activate and license BillQuick Outlook Add-In	<a href="#">Product Activation</a> <a href="#">#Licensing</a>


## SYSTEM REQUIREMENTS

For successful installation and implementation of your Outlook Add-In software, be sure your computer systems meet or exceed the requirements mentioned below.

### Hardware Requirements

Each personal computer on which BillQuick Outlook Add-In will be installed should meet or exceed the following requirements:

- 2.0 GHz Intel Pentium IV-class processor or faster
- 2 GB RAM
- 500 MB free hard disk space
- 1024 x 768 resolution or more


 Be sure your network server contains sufficient memory and other resources for efficient, high speed operation.

## Software Requirements

Here are the operating system and other software requirements for BillQuick Outlook Add-In.

### Operating System Requirements

- Windows 10/Windows 8/Windows 7/Windows Vista

 Be sure to install the latest Windows service packs and critical updates. Check the Microsoft website for the latest updates to Windows, .Net Framework, and Data Access Components. Some versions of Windows include an automatic update option.

### Other System Requirements

- Outlook 2016 or Outlook 2013 or Outlook 2010 (32-bit or 64-bit) or above with latest service packs
- BillQuick 2016 (Lite, Basic, Pro or Enterprise) edition
- Microsoft .NET Framework 4.5 or later (automatically installed with BillQuick)
- Microsoft Data Access Components 2.8 or later (automatically installed with BillQuick)
- Microsoft Windows Installer 3.1 or later (typically installed or updated with Windows)

# INSTALLATION

Basic start-up procedures for BillQuick Outlook Add-In involve a few quick steps:

1. Install Outlook Add-In
2. Connect to BillQuick database

3. Activate and register Outlook Add-In



Before installing the software, please read the [End User License Agreement](#) (EULA).

## Installing on a Computer System

Outlook Add-In can be installed on a single-user system or a networking environment. It also operates in a network environment, both peer-to-peer networks and ones with network servers. In either scenario, the database will be located in a folder on a personal computer or shared drive.

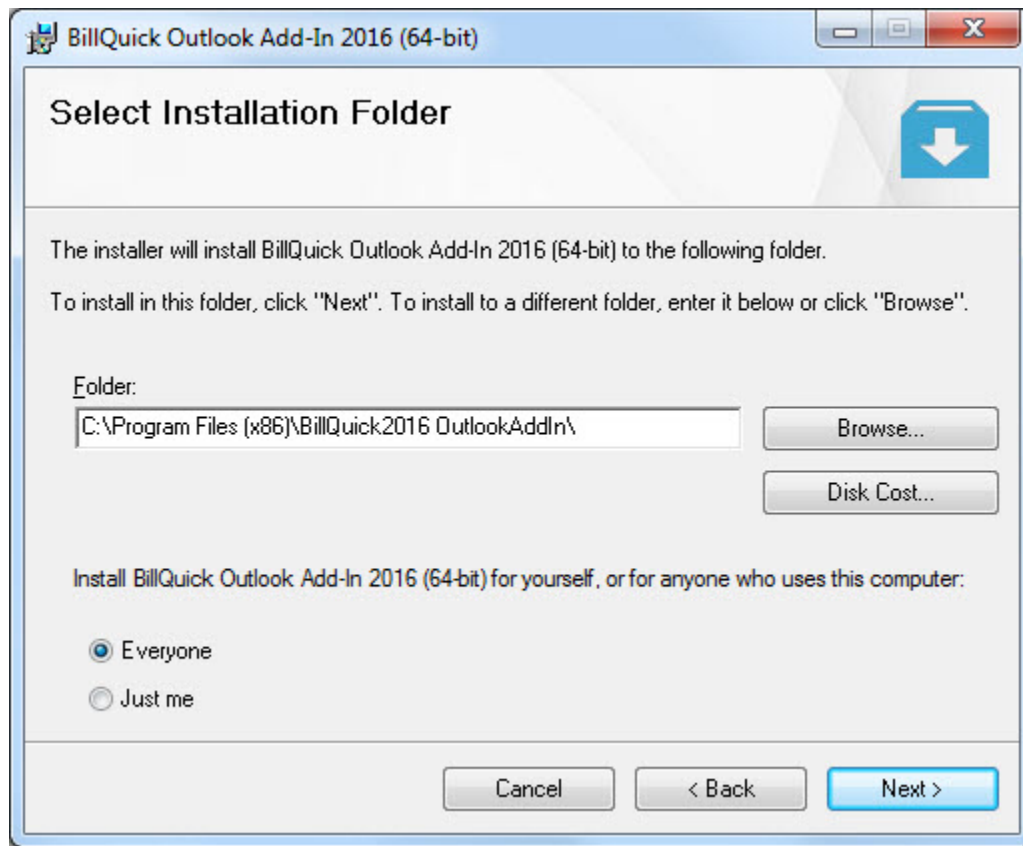
If you prefer to download a copy of Outlook Add-In, go to [www.BillQuick.com](http://www.BillQuick.com) and follow the steps.



The downloaded copy of BillQuick Outlook Add-In is in a Zip format. You will need a Zip archiving or extraction program such as WinZip. If you do not have such a Zip program, please obtain one from a shareware website or a software store.

Follow the steps below to install Outlook Add-In on a personal computer:

1. If you have downloaded BillQuick Outlook Add-In, navigate to the folder where you placed the extracted files. Double-click Setup.exe.
2. When the first BillQuick Outlook Add-In installation screen appears, read the information and follow the instructions on each window.
3. Specify the installation folder for Outlook Add-In by clicking Browse. Else, accept the default location. Click Next.




4. After the installation begins, a progress bar displays. When the Installation Complete screen appears, click Close.

## Installing in a Network Environment

In a network environment, you will bring other users into the setup. Outlook Add-In software will be installed on the computer of each person who needs to access it. With the above steps complete on each personal computer, you will:

1. Install Outlook Add-In (*see above*).
2. Connect to the desired BillQuick database in a shared folder.
3. Register the computer with the BillQuick database.

 BillQuick Outlook Add-In also works in other network scenarios. Contact BillQuick Support for more information (310-602-4030).

## Peer-to-Peer Network Environment

To install on a peer-to-peer network:

1. On the computer used by your primary Outlook Add-In user (BillQuick Supervisor), complete the steps for installing Outlook Add-In (*see above*), connecting to a BillQuick database (*see BillQuick Database below*), and activating Outlook Add-In.



BillQuick Outlook Add-In automatically connects to the database that was last opened by BillQuick program on the computer.

2. Install Outlook Add-In on the first computer from which you want a user to access it (*follow the steps above*).
3. Make sure the desired BillQuick database is in a shared folder and has been last opened by your BillQuick program.
4. Start BillQuick Outlook Add-In via Microsoft Outlook program.
5. On login, Outlook Add-In connects to the shared BillQuick database.
6. Next, Product Activation screen displays wherein you can enter the license and registration keys from the email you received from BQE Software. You can also cut-paste the keys, if desired. Click OK when you have finished.
7. Repeat these steps for each computer from which users will access BillQuick Outlook Add-In.



The Product Activation screen provides various activation options. Read more about Product Activation later.

## Network Server Environment

To install BillQuick Outlook Add-In in a network server environment, you can:

1. Install BillQuick Outlook Add-In, connect to the BillQuick database, and register the computer (*follow the same steps as for Peer-to-Peer Network above*).
2. Utilize Active Directory Services on a domain network. With this capability, you can 'push' BillQuick Outlook Add-In to the workstations.

For more information, see the BillQuick Knowledge Base article, 'How to Install BillQuick on Workstations using Active Directory Services' ([KB article](#)).




## Upgrading from a Previous Version

Before you begin the upgrade process, you must download and install BillQuick 2016 and the latest 2016 version of BillQuick Outlook Add-In.

The BillQuick Outlook Add-In 2016 program installs separately from your current version (2013 or below). We recommend that you uninstall or disable any prior versions of this add-in. If you want to uninstall it, do so from Control Panel, Add/Remove Programs.

Please follow the steps below to upgrade to BillQuick Outlook Add-In 2016:

1. Download the latest version of the BillQuick Outlook Add-In 2016 from the Support Downloads section of our [website](#). It is the first file listed there and includes all previous service packs and updates. *Make sure you select the correct version depending on whether you have 32- or 64-bit Microsoft Office.*
2. Copy the setup program to the desktop of each workstation that will use BillQuick Outlook Add-In and run the installer.
3. When the BillQuick Outlook Add-In installation screen appears, read the information and follow the instructions on each screen by clicking Next.
4. BillQuick Outlook Add-In will appear in the Add-Ins menu the next time you open Microsoft Outlook. Upon accessing it for the first time, the Product Activation screen appears. Click the *Already Purchased* option and verify your Company Name.
5. Enter both the License Key and Registration Key that were emailed to you. ***The keys are created based on your Company Name;*** so if you change the name here, you may need a different set of keys to be created and sent. *Please contact BQE Sales at [sales@bqe.com](mailto:sales@bqe.com) or (310) 602-4020.*

 If you are experiencing problems while upgrading from a previous version of BillQuick Outlook Add-In to 2016, please check the [Knowledge Base Articles](#) for troubleshooting and technical issues. Else, contact us at (310) 602-4030 or [support@bqe.com](mailto:support@bqe.com).

## START-UP


In order to get BillQuick Outlook Add-In into the running mode please follow the steps below. At this point BillQuick Outlook Add-In should already be installed on your computer.

## Connecting to BillQuick Database

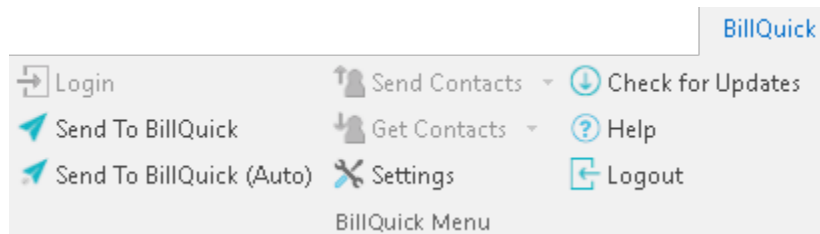
The functionality of BillQuick Outlook Add-In depends on the BillQuick program database and hence you need to connect to it. BillQuick should be installed on the same system as your BillQuick Outlook Add-In.

To connect Outlook Add-In to a BillQuick database:

1. Open your BillQuick program.
2. Select the desired BillQuick Company database with which you want to connect BillQuick Outlook Add-In.
3. You may log into BillQuick with a User ID and Password or close it.

 If you are using a SQL Server database for BillQuick, you will have to enter Server Name, Supervisor Password, and select the database from the drop-down.

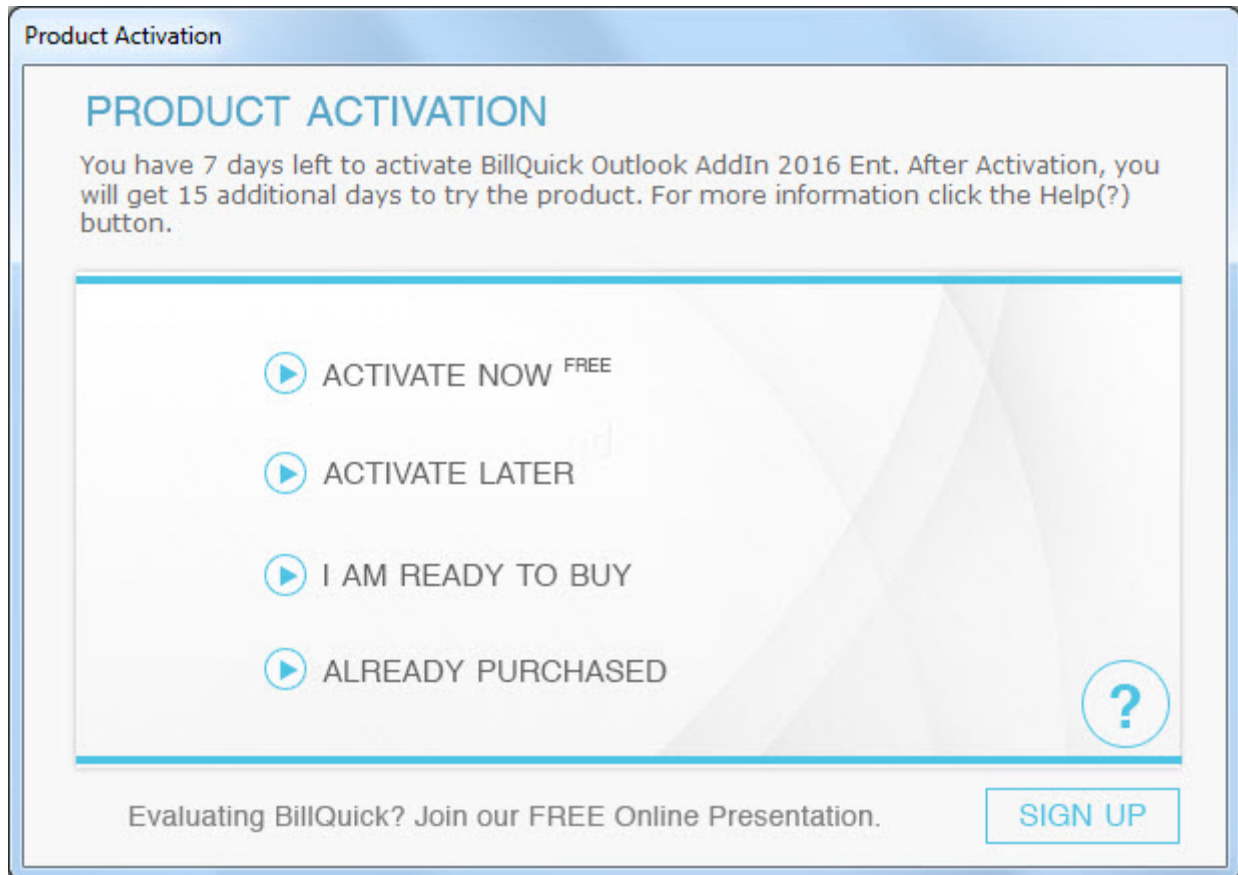
4. Start the Microsoft Outlook program. You will find BillQuick Outlook Add-In embedded on its menu bar.



5. Next, you can log in. After doing so, you are prompted to activate the product.

## Activating Product

After installing Outlook Add-In, you are prompted by the Product Activation screen. The screen provides four options.



- **Activate Now** - Enter a key to continue your free 15-day trial.
- **Activate Later** - Continue your free 7-day period of review.
- **Ready to Buy** - Go to [www.BillQuick.com](http://www.BillQuick.com) to purchase your software license.
- **Already Purchased** - Enter your license and registration keys to fully activate Outlook Add-In.

## Evaluating BillQuick Outlook Add-In

If you are evaluating Outlook Add-In, you may choose Activate Now or Activate Later. Click Activate Now to provide your details to BQE Software and obtain an evaluation key. Activate Later allows you to continue working with Outlook Add-In during a 7-day free trial. After this period, you must obtain an evaluation key or buy a software license.

1. Enter valid information in the screen. This is how BQE Software will contact you with your evaluation, license, and registration keys. When all the information is entered, click Next to continue.


Product Activation

## PRODUCT ACTIVATION

Please provide the following information below. Your evaluation key will be sent to the provided email address immediately.

[Click here if you already have a key](#)

Company Name:	<input type="text" value="Hendricks Consulting LLC"/>		
Street:	<input type="text" value="1175 Airport Drive, Suite 500"/>		
City:	<input type="text" value="Torrance"/>		
State:	<input type="text" value="CA"/>	Zip:	<input type="text" value="90555"/>
Email:	<input type="text" value="consulting@hendricks.com"/>		
Phone:	<input type="text" value="3105559365"/>		



We respect your privacy [Click here to read our Privacy Policy.](#)

2. Within a few minutes, you will receive your 15-day evaluation key via email. Alternatively, you can generate an evaluation key via the [web](#) or by calling BQE Software at (310) 602-4020.
3. Enter this Evaluation Key in the space provided. Click Activate!
4. You will get a reminder message stating that you are using an evaluation copy of the software and to continue beyond 15-days, you need to purchase it.

While in evaluation mode, continue to use Outlook Add-In. All of the information entered into BillQuick is saved and made available after switching from the evaluation mode to the licensed mode.



You can run the evaluation software and licensed software together.

## Licensing and Registering

BQE Software offers various options for licensing and registering your copy of Outlook Add-In. You can use the Product Activation screen or Product Licensing and User Management console (in BillQuick) to do so. Follow these steps to proceed:

1. When you are ready to purchase BillQuick Outlook Add-In, click 'I Am Ready to Buy' on the Product Activation screen and purchase your software license from the BillQuick website. Alternatively, you can call BQE Software at (310) 602-4020 and speak with a BillQuick Account Rep.
2. After purchasing the license, click 'Already Purchased' option. It asks for your exact company name and license and registration keys.
3. Using the email you received, you would enter or cut-paste your company name (if you want to make a change, contact your BillQuick Account Rep) and keys.
4. Click Register. Outlook Add-In is now licensed for unlimited use.
5. In a networked environment, the Supervisor needs to repeat the same procedure on each computer.

Alternatively, you can license your software using BillQuick Product Licensing and User Management screen > Licenses tab. In addition, on the Users tab, you can assign Outlook Add-In users (employees and vendors).

## OUTLOOK ADD-IN BASICS

This section focuses on the basics of the BillQuick Outlook Add-In environment. It covers:

- Starting-up Outlook Add-In
- Logging into Outlook Add-In
- Navigating Outlook Add-In

### Starting Up

You can access BillQuick Outlook Add-In directly from your Outlook program. The functionality of BillQuick Outlook Add-In depends on the BillQuick program database. If you have previously worked with BillQuick Outlook Add-In on your computer, it will remember the previous settings. *You can skip to Log-in below.*

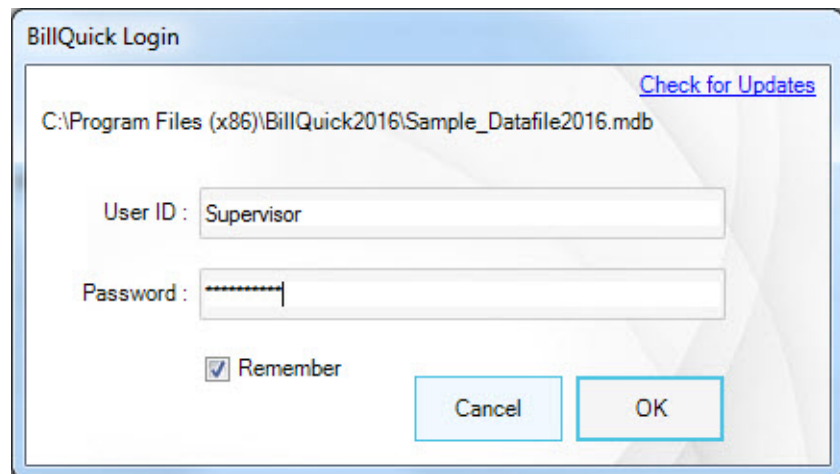
Else, you need to connect to the BillQuick database. After you have successfully established connection and security is turned on, you will be prompted for a login.

### Logging In

You can log in and connect to the BillQuick database from your Microsoft Outlook program. Enter a User ID and Password. Your BillQuick manager or supervisor will provide you with an ID and password. For now, use these defaults:

User ID: supervisor

Password: supervisor

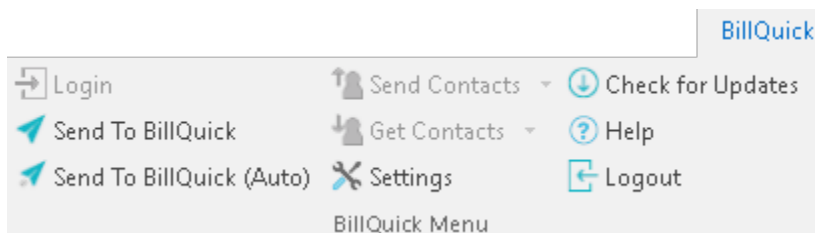


## Navigating

After installation, the BillQuick Outlook Add-In module is embedded into your Microsoft Outlook program. You can access its functions using the main menu bar.

### Menu Bar

BillQuick Outlook Add-In functions are available from the BillQuick menu embedded in the menu bar of Microsoft Outlook (also in its Add-ins menu).

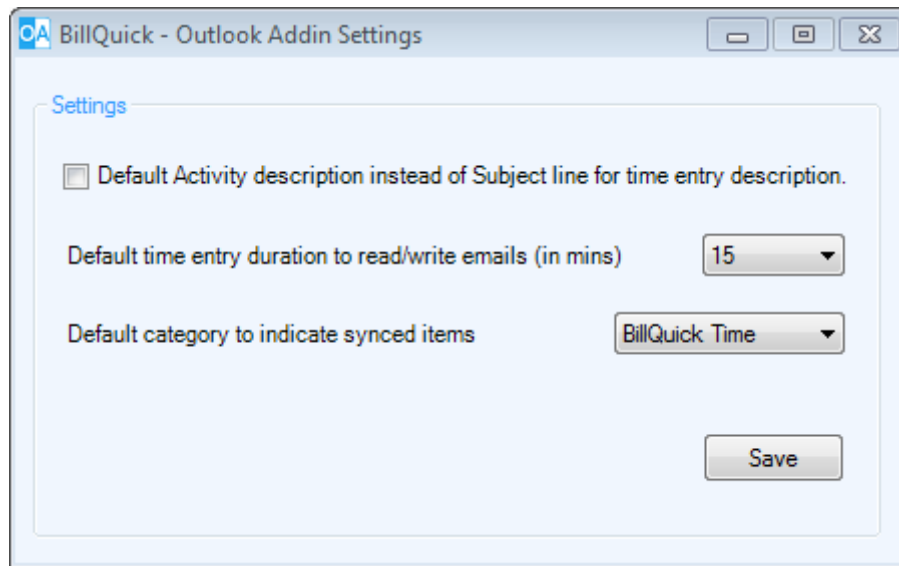


You can also access the BillQuick Outlook Add-In options via the shortcut menu in Microsoft Outlook.

## WORKING

If you use Microsoft Outlook to keep track of your appointments, tasks, contacts and emails, then BillQuick Outlook Add-In can easily convert this data into BillQuick time and other master information.

You can specify your preferences in the BillQuick-Outlook Add-In Settings screen (accessed from the BillQuick menu).



## Sending Appointments

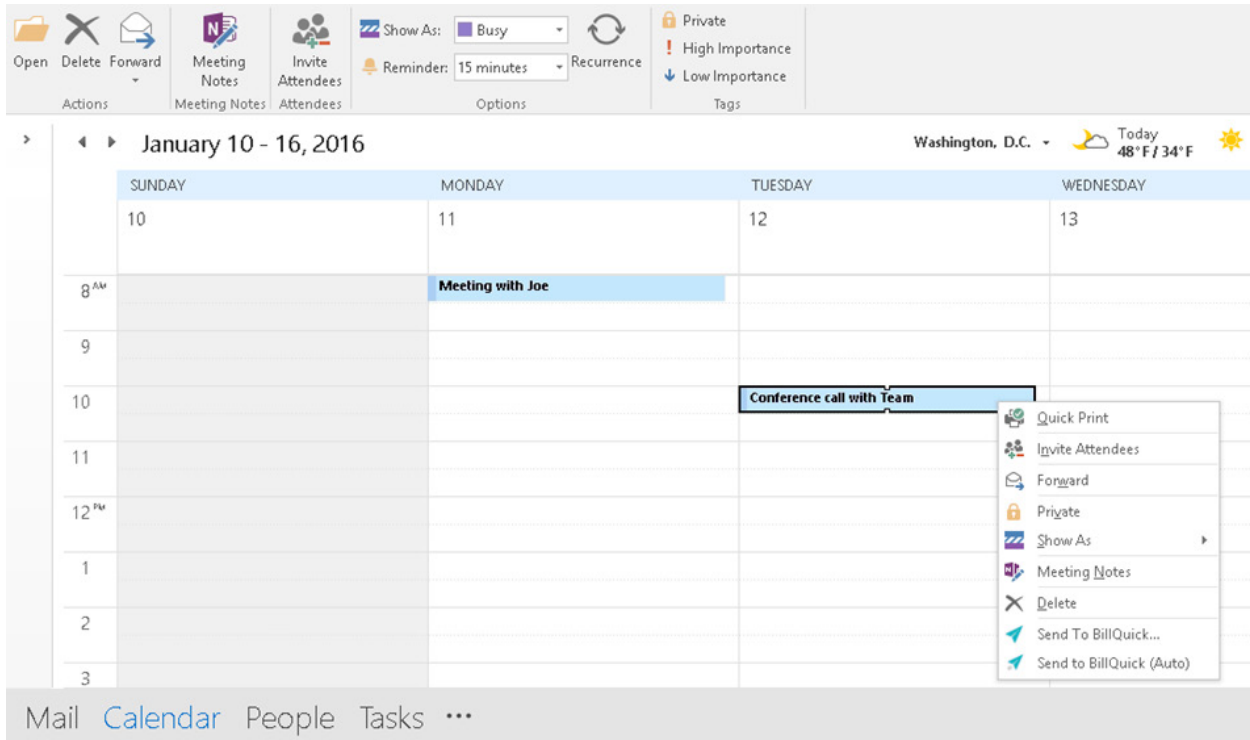
You can send regular appointments as well as an occurrence of a recurring appointment to BillQuick.

1. In Microsoft Outlook, open your Calendar.
2. Right-click on the appointment you want to send.
3. To review the appointment, open it from the Home menu. If the appointment is a recurring one, click 'Open this occurrence'.




You can also double-click the appointment in the Calendar view to open it.

4. On the Appointment screen, review the entries and make changes if required.

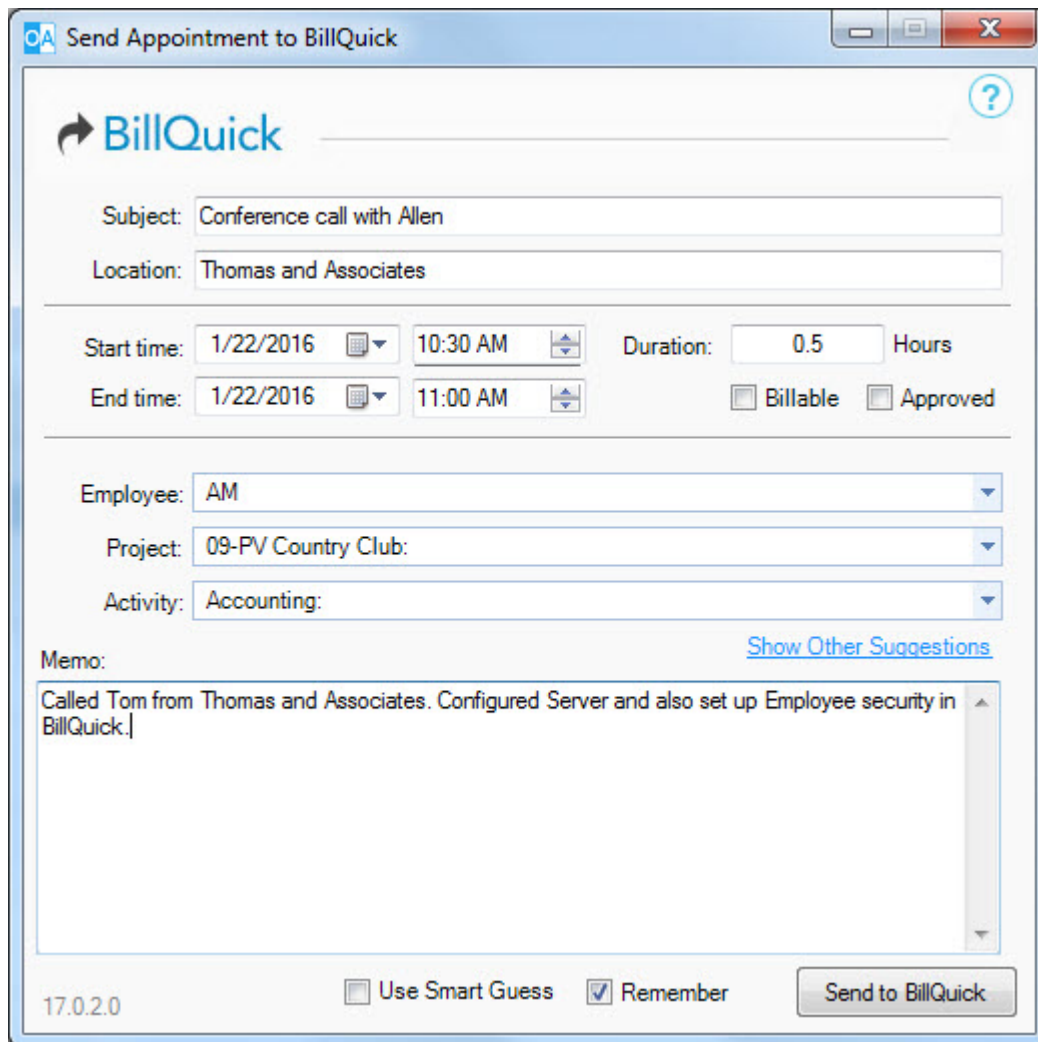


The screenshot shows the Outlook calendar interface for January 10-16, 2016. A meeting titled "Conference call with Team" is scheduled for Tuesday, January 12, from 10:00 AM to 11:00 AM. A context menu is open over this meeting, displaying the following options: Quick Print, Invite Attendees, Forward, Private, Show As, Meeting Notes, Delete, Send To BillQuick..., and Send To BillQuick (Auto). The top of the interface includes a ribbon with various actions like Open, Delete, Forward, Meeting Notes, Invite Attendees, Show As (set to Busy), Reminder (15 minutes), Recurrence, Private, High Importance, and Low Importance. The bottom navigation bar shows "Mail", "Calendar", "People", and "Tasks".


5. Click on the BillQuick menu and select 'Send to BillQuick' option.
6. On the 'Send Appointment to BillQuick' screen, enter or edit the required information such as Start and End time, Duration, Project, Employee and Activity.

 If you prefer to map the description of the Activity selected here to the Time Entry description instead of the Subject line, check that option in the Settings screen.





7. Type a Memo if you want to add some notes to the time entry in BillQuick.
8. Click 'Send to BillQuick' button to save the selected appointment as a BillQuick time entry.

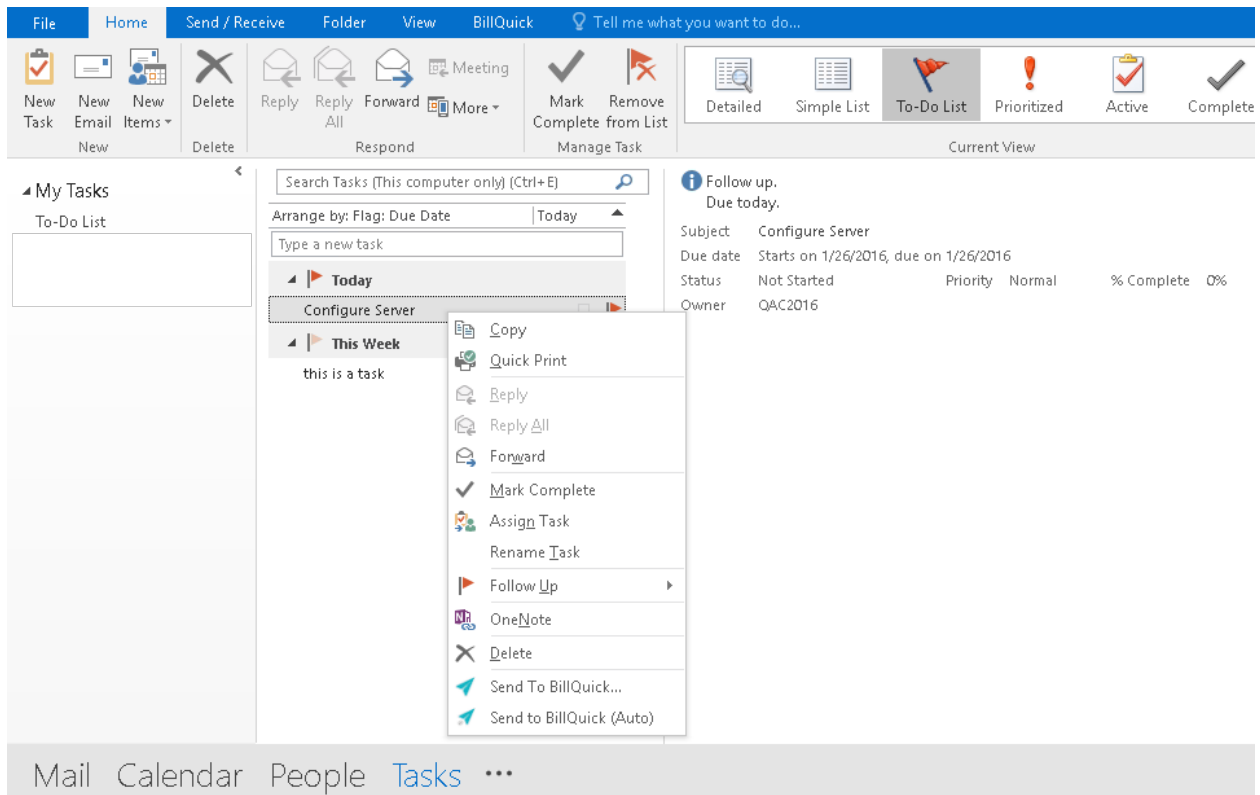
 BillQuick Outlook Add-In provides the 'Smart Guess' feature which intelligently matches the Outlook appointments to the BillQuick field data based on the past patterns. You can thus associate Outlook Subject or Location with BillQuick Project or Activity. Check the option to remember the last three matches of activity, project, and employee.

## Sending Tasks


Using BillQuick Outlook Add-In, you can review and then send Microsoft Outlook Tasks as time entries to BillQuick.

1. In your Outlook program, select Tasks.


2. Right-click on the task that you want to send to BillQuick.



3. To review the task, open it from the Home menu.
4. On the Task screen, review the task details like Subject, Date, Status, and so on.
5. Click on the BillQuick menu and select 'Send to BillQuick' option.
6. On the 'Send Task to BillQuick' screen, enter the required information such as Start and End time, duration, Project, Employee and Activity.

 If you prefer to map the description of the Activity selected here to the Time Entry description instead of the Subject line, check that option in the Settings screen.

7. Type a Memo if you want to add noted to BillQuick time entry.
8. Click 'Send to BillQuick' button to save the selected task as a time entry in BillQuick.

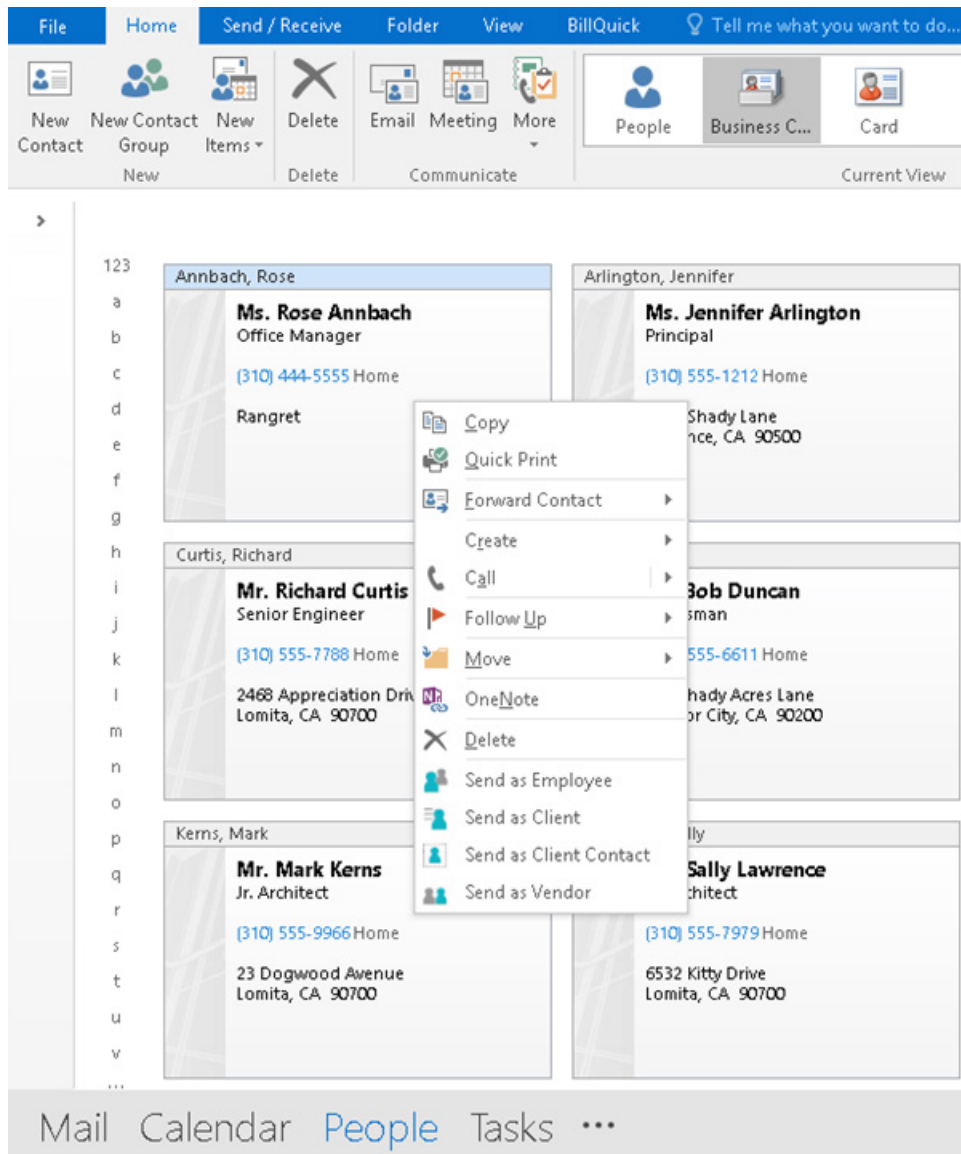
 BillQuick Outlook Add-In provides the 'Smart Guess' feature which intelligently matches the Outlook tasks to the BillQuick field data based on the past patterns. You can thus associate Outlook Subject or Location with BillQuick Project or Activity. Check this option to remember the last three matches of activity,

project, and employee.

## Sending Contacts


Contacts from Microsoft Outlook can be sent to BillQuick and stored as employees, clients, client contacts and vendors. You can also import this information into Outlook from BillQuick. The options for sending and getting contacts are visible only when viewing contacts in Microsoft Outlook.

1. In Microsoft Outlook, select Contacts.
2. Click on the BillQuick menu to select the Send Contacts option. Else, open the Contacts screen and use the BillQuick menu to choose the 'Send as' option.




3. For sending contacts, Outlook Add-In gives you following options. Select the desired option.

- Send as Employee
- Send as Client
- Send as Client Contact
- Send as Vendor

 When sending Client Contacts, it prompts you to select a Client with whom you wish to associate the client contact information.

4. If a contact with the same name, company or phone number exists in BillQuick, Outlook Add-In prompts you with the Smart Match screen, where you can make your selections for transfer of contact data.

 Outlook Add-In also allows you to can get employee, client, client contact and vendor data as Contacts from BillQuick into Outlook. You can choose these options on the BillQuick menu, Get Contacts. *For more information, check the Outlook Add-In 2016Help.*

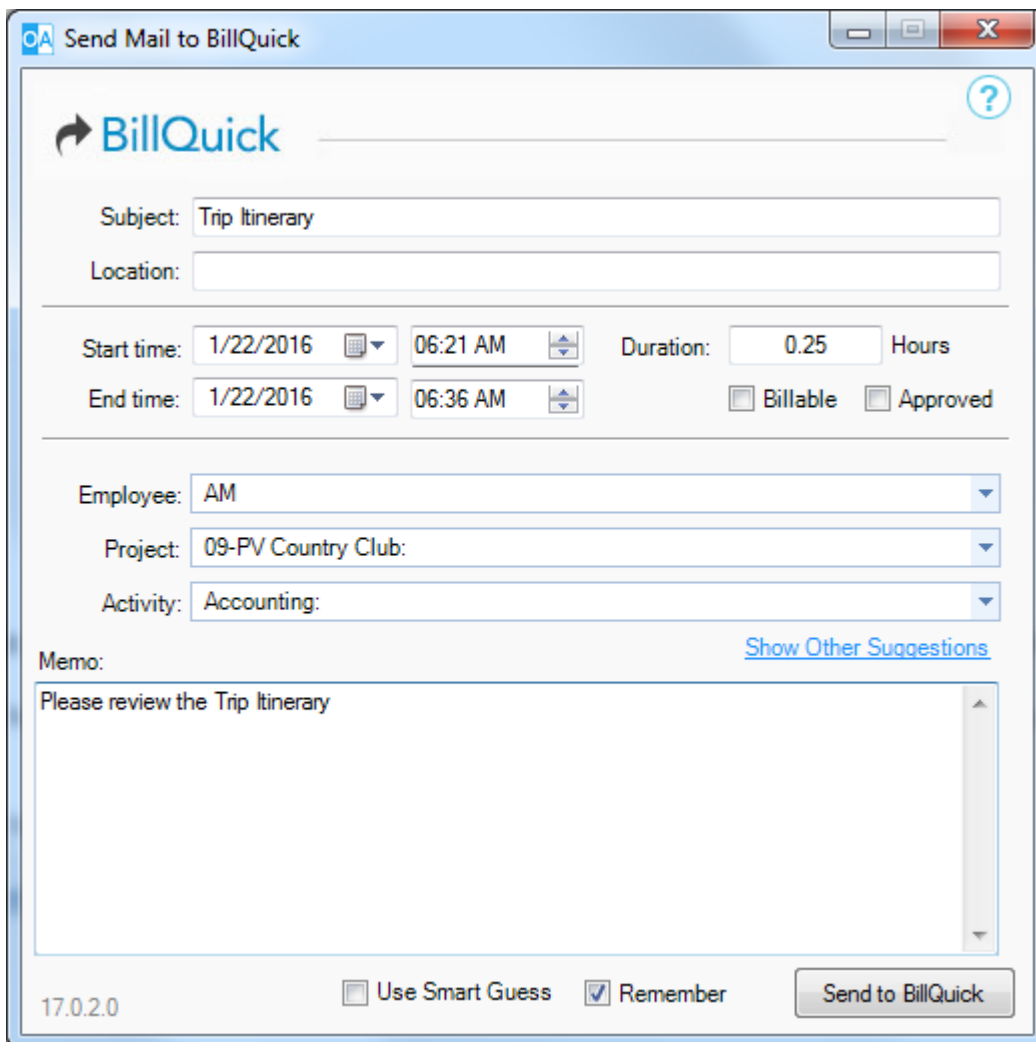
## Sending Emails

Messages from the Microsoft Outlook Inbox and Sent folders can be sent to BillQuick just like appointments and tasks to record time spent on reading and writing emails. Existing as well as new email messages can be converted to BillQuick time entries.

1. In Microsoft Outlook program, select Mail.
2. Right-click on the email that you want to send.
3. To review the mail, open it from the Home menu or shortcut menu. If you want to compile a new message, click New on the menu bar and compile a new email.
4. On the Message window, review the Subject of the email as it is transferred as time entry description.
5. You have various options to send the email to BillQuick.
  - From the BillQuick menu, select 'Send to BillQuick' option.
  - You can also access this option by directly right clicking the email message in the Inbox or Sent Items list.
  - In case of a new email, click on the 'Send and Log' option in the BillQuick menu. It allows

you to send the email to the recipient while logging that time in BillQuick.

6. In the 'Send Mail to BillQuick' screen, review or edit the relevant information like Start and End time, Duration, Project, Employee and Activity.
  - If you prefer to map the description of the Activity selected here to the Time Entry description instead of the Subject line, check that option in the Settings screen.
  - If you prefer to specify a different default time entry Duration for reading and writing emails, change it in the Settings screen. For example, instead of 0.25 Hours (15 minutes) you may want it to default to 10 minutes.



17.0.2.0  Use Smart Guess  Remember

7. Type a Memo if you want to add it to the time entry in BillQuick.
8. Click 'Send to BillQuick' button to send the email as a time entry.



The 'Smart Guess' feature intelligently matches the Outlook data to the BillQuick fields based on the past patterns. You can thus associate Outlook Subject and Location with BillQuick Project or Activity. Check the Remember option to remember the last three matches of activity, project, and employee.

---

*Congratulations! You have now successfully installed BillQuick Outlook Add-In and understood its basic functionality. To learn more about this program, check the **BillQuick Outlook Add-In Help** or visit [Product Overview](#)*

*For more information, visit us at [www.bqe.com](http://www.bqe.com). If you have any trouble in using Outlook Add-In, please contact BillQuick Support at (310) 602-4030 or [Support@bqe.com](mailto:Support@bqe.com). For other questions, please call us at (888) 245-5669 (US and Canada) or (310) 602-4020; or email [Sales@bqe.com](mailto:Sales@bqe.com)*



## World Headquarters

### North & South America

3825 Del Amo Boulevard, Torrance, CA 90503

United States of America

Tel: (866) 945-1595 (toll-free)  
+1 (310) 602-4010

Email: [sales@bqe.com](mailto:sales@bqe.com)  
[support@bqe.com](mailto:support@bqe.com)

## Regional Offices

### Australia, New Zealand & Asia

Level 40 North Point Towers, 100 Miller Street, North Sydney, NSW 2060

Australia

Tel: 1300 245 566 (toll-free)  
+61 (02) 9657 1355

Email: [aus-sales@bqe.com](mailto:aus-sales@bqe.com)  
[aus-support@bqe.com](mailto:aus-support@bqe.com)

### Europe, Middle East & Africa

Crosshaven Co. Cork

Ireland

Tel: +44 2034119852

Email: [uk-sales@bqe.com](mailto:uk-sales@bqe.com)  
[uk-support@bqe.com](mailto:uk-support@bqe.com)

For more information, visit  
[www.bqe.com](http://www.bqe.com) or call  
(866) 945-1595.

[www.bqe.com](http://www.bqe.com)  
[www.twitter.com/BillQuick](https://www.twitter.com/BillQuick)  
[www.facebook.com/BillQuick](https://www.facebook.com/BillQuick)

©2009-2016 BQE Software Inc. All rights reserved. BQE, BQE logo and BillQuick logo are registered trademarks and/or registered service marks of BQE Software Inc. in the United States and other countries. Other parties' trademarks or service marks are the property of their respective owners.