

BillQuick-QuickBooks Basic Integration Guide

CONTENTS

INTRODUCTION	1
SOFTWARE EDITIONS SUPPORTED	1
INTEGRATION BASICS	2
MODES OF SYNCHRONIZATION	3
INTEGRATION RULES	3
INTEGRATION SETTINGS	3
DATA INTEGRATION	4
INITIAL INTEGRATION	5
DATA VERIFICATION	8
DAY-TO-DAY INTEGRATION	9
BEST PRACTICES	10

INTRODUCTION

Data integration between BillQuick® (by BQE Software) and QuickBooks® (by Intuit) can make your time billing, accounting, and financial management tasks easier. Full-featured, BillQuick helps you manage your company, whether your time, expense, billing and reporting needs are simple or you require complex billing, reporting and management capabilities. QuickBooks is a business accounting software that provides solutions such as general accounting, accounts receivable, accounts payable, online banking, reporting, payroll, and other functions. Integrated, BillQuick and QuickBooks deliver a virtual program that *ensures data accuracy, eliminates time-consuming duplicate manual entry, enhances flexibility, and increases control over your bottom line.*

The goal of this BillQuick↔QuickBooks Basic Integration Guide is to help you understand the basics of data integration between BillQuick and QuickBooks. BillQuick controls integration, enabling you to choose accounts, what data flows between the programs, and much more. BillQuick automatically creates smart connections using your settings and its built-in intelligence.



Check out BillQuick Training and Services for a standard or custom training course on data integration with QuickBooks. BQE Software also offers Consulting services in these areas.

Software Editions Supported

All BillQuick editions - Basic (Microsoft Access database), Pro (Microsoft Access and SQL Server Express database) and BillQuick Enterprise (Microsoft Access, SQL Server Express and Microsoft SQL Server Standard database) - integrate with the following QuickBooks editions:

- QuickBooks Pro/Premier editions all flavors, including the Accountant's Edition (2002 and later)
- QuickBooks Enterprise Solutions all flavors, including the Accountant's Edition (3.0 and later)
- QuickBooks Canadian Edition (2004 and later)
- QuickBooks UK (2003 and later)
- Reckon Accounts (formerly QuickBooks Australia 2008 and later)

We do not support QuickBooks Plus edition.



Check out the [Reckon Add-On Marketplace](#) for Reckon Accounts details.

INTEGRATION BASICS

Whether you have a technical background or not, it is helpful to understand the basics of BillQuick↔QuickBooks integration. This can help you visualize what is happening behind the scenes as BillQuick manages the transfer of data to and from QuickBooks.

There are some differences between QuickBooks and BillQuick that need to be understood in order to ensure smooth and accurate data integration. BillQuick is project-centered and supports a hierarchical structure while as QuickBooks is client-centered and uses a flat project structure. Each record common to BillQuick and QuickBooks share a unique *Link ID* that identifies them as related. This *does not mean* data in both databases is the same; only that they share common data. BillQuick Project records contain data and options that QuickBooks Job records do not and vice versa. What is important for integration are that the two programs share key data.

The table below shows the direction data can *potentially* flow between BillQuick and QuickBooks. Whether it flows in one direction or the other (or both directions) depends on choices made on the Integration Settings screen. You can be very specific in determining how data flows *to* and *from* BillQuick, and which General Ledger accounts in QuickBooks are posted.

BillQuick Table Name	Dataflow	QuickBooks Table Name
Activity Codes	↔	Service Item
Expense Codes	↔	Other Charge Item
Employee	↔	Employee
Vendor	↔	Vendor
Client	↔	Customer
Project	↔	Job
Time Entry	↔	Time Tracking
Expense Log	←	Checks and Credit
Invoice	↔	Invoice
Payment	↔	Payment
Vendor Bills	↔	Bills
Chart of Accounts	↔	Chart of Accounts
Estimate	←	Estimate
Class	↔	Class



To review detailed, field-by-field mapping of records between QuickBooks and BillQuick, see BillQuick Help, BillQuick↔QuickBooks Integration, Table and Field Mapping.

As you can see above, integration of BillQuick with QuickBooks is very comprehensive. BillQuick creates a log that records the events and exceptions involved in data synchronization with QuickBooks. It flags this log file with a date stamp.

Bottom Line: The major benefit is that you do not have to re-enter BillQuick data into QuickBooks. BillQuick manages

the process, using your synchronization settings.

Modes of Synchronization

BillQuick offers three modes of synchronization with QuickBooks.

Synchronization	QuickBooks
Real-Time	✓ ¹
On-Schedule	✓
On-Demand	✓

Real-Time Synchronization means that data integrates between BillQuick and QuickBooks when you update a record in either program. It is completely automatic and requires no action on your part. However, you will need to specify this option in the QuickBooks Integration Wizard or QuickBooks menu only once and then from that point onwards, data is synced automatically.

In contrast, *On-Schedule Synchronization* means that BillQuick reminds you to synchronize on the schedule you choose. The schedule may be set in the Global Settings screen.

On-Demand Synchronization allows you to transfer all updated data or just one record at a time, whenever you want. BillQuick includes a Send To QuickBooks option on many screens that enables you to send a new or changed record to QuickBooks instantly and directly from that screen.

Generally, for batch or group data synchronization, you would use the Integration menu, QuickBooks, Get or Send submenu. The menu provides various synchronization options enabling you to control sending and getting data.



BillQuick identifies the records that have a corresponding record in QuickBooks by displaying  in the grids.

Integration Rules

BillQuick handles most of the time and billing data differently from QuickBooks. To ensure accuracy and completeness of data transfer, BillQuick↔QuickBooks integration follows a set of rules. Some of these rules may not be relevant for the first-time data transfer but shall apply in future synchronization.



Check out the [BillQuick-QuickBooks Advanced Integration Guide](#) for details.

Integration Settings

In BillQuick, you can specify data transfer rules and settings in the *BillQuick-QuickBooks Integration Settings* screen. You can also restrict the data sent from or transferred to BillQuick by setting filters. These settings apply company-wide

and are used as defaults when you choose to synchronize data between BillQuick and QuickBooks.

A key step in the integration process is to assign general ledger (G/L) accounts to BillQuick activity codes, expense codes and other invoice items prior to the synchronization. This is because QuickBooks requires G/L accounts for all items and transactions. You can assign G/L accounts to individual items or specify them at the project level. This is done from the BillQuick-QuickBooks Integration Settings screen.

BillQuick also allows you to assign QuickBooks payroll items and accounts to its payroll items such as regular time, overtime, and vacation on an employee or employee group basis.

You can transfer classes from QuickBooks and assign them to BillQuick items such as activities, expense codes and even projects. QuickBooks classes can be assigned to individual items or their groups.



QuickBooks accounts and classes are available for assignment in BillQuick after a connection has been established between the two programs.

Thus, using the BillQuick-QuickBooks Integration Settings screen, you can specify the following:

- Send Settings
- Get Settings
- Account Assignments
- Payroll Settings
- Class Assignments



Check out the [BillQuick-QuickBooks Advanced Integration Guide](#) or BillQuick Help for details.

DATA INTEGRATION

Initial or first-time integration populates the BillQuick or QuickBooks company database with information from the other program. Your initial synchronization settings determine *what* information and *how much* of it is shared between the programs. For example, you may decide to move QuickBooks data for only the last two years to BillQuick. The first-time integration brings the databases of the two programs to the same level.

To gain the most complete and useful practice management information from the start and to reduce setup time, we recommend that you add or setup master information, and other time and billing data in your BillQuick database.



It is preferable to create activity (service) and expense (other charge) items in QuickBooks and have them transferred into BillQuick. This reduces the step of creating or assigning G/L accounts for them in BillQuick.

For data integration, you can specify synchronization options on the *BillQuick-QuickBooks Integration Settings* screen and then use the Integration menu to transfer each type of data. Alternatively, you could make use of *QuickBooks Integration Wizard* in BillQuick, as an easier and faster method for first-time integration. This wizard walks you through the process of specifying initial synchronization options, mapping of accounts and items, and finally the transfer of data.

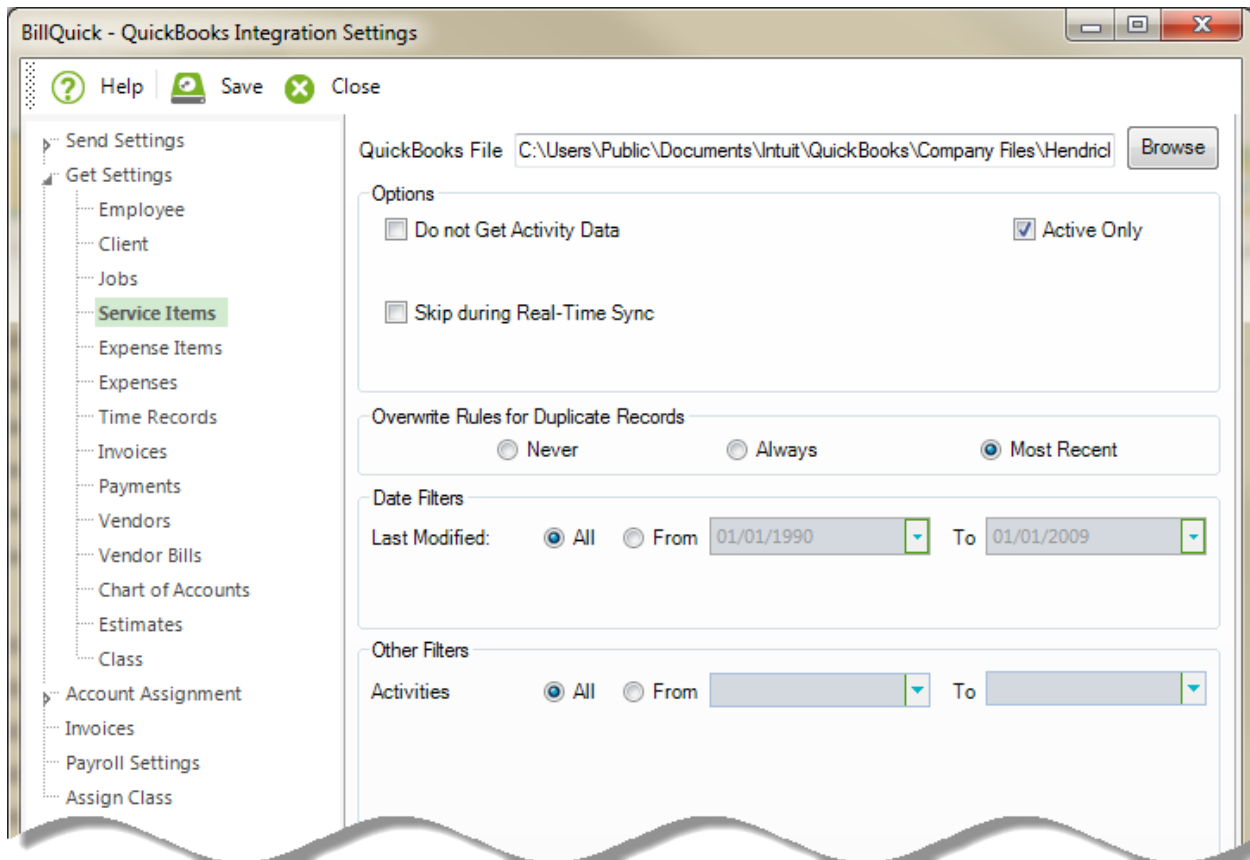
Initial Integration

Typically, there are four possible scenarios for first-time integration:

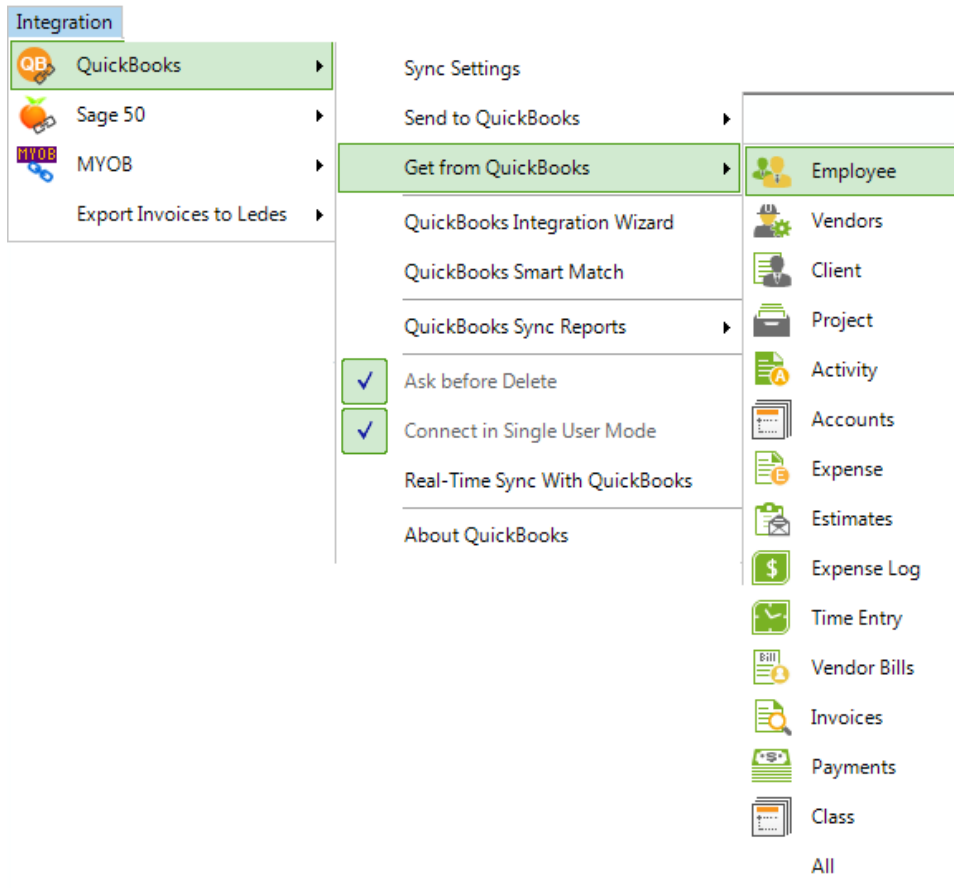
- New BillQuick-Existing QuickBooks User
- Existing BillQuick-Existing QuickBooks User
- New BillQuick-New QuickBooks User
- Existing BillQuick-New QuickBooks User

The steps involved in the first-time integration are very simple:

1. Create a new company file or back up an existing company file in BillQuick or QuickBooks.
2. Grant access rights to BillQuick in your QuickBooks program.
3. Specify synchronization settings in the BillQuick-QuickBooks Integration Settings screen. Later, fine-tune these settings for day-to-day integration process.
 - Get Settings and Send Settings for each BillQuick module (or skip the synchronization for some modules)
 - QuickBooks account assignment for BillQuick items (activities, expenses, invoice line items)
 - Payroll settings for BillQuick payroll items
 - QuickBooks class assignment for BillQuick items (activities, expenses and projects)



4. Decide the type of data integration or synchronization mode:
 - On-Demand
 - On-Schedule
 - Real-Time Synchronization
5. Start data synchronization using Integration menu, QuickBooks, Send to QuickBooks or Get from QuickBooks.



Below are the BillQuick Send and Get menu items and the corresponding QuickBooks screens.

BillQuick Menu Item	QuickBooks Screen
Employee*	Employee
Vendors*	Vendor
Client*	Customer
Project*	Job
Activity*	Service Item
Accounts	Chart of Accounts
Expense*	Other Charge Item
Estimates	Estimate
Expense Log	Checks and Credit
Time Entry	Time Tracking
Vendor Bills	Bills
Invoices	Invoices
Payments	Payments
Class	Class List

* The screen name may be different based on your profession or industry, or if you customized them using the BillQuick Custom Labels feature.

Data Verification

When initial data transfer is complete, you can open the corresponding screens in BillQuick and QuickBooks for a quick verification. Data touch-up maybe needed in either BillQuick or QuickBooks. This ensures that your information is accurate and complete.

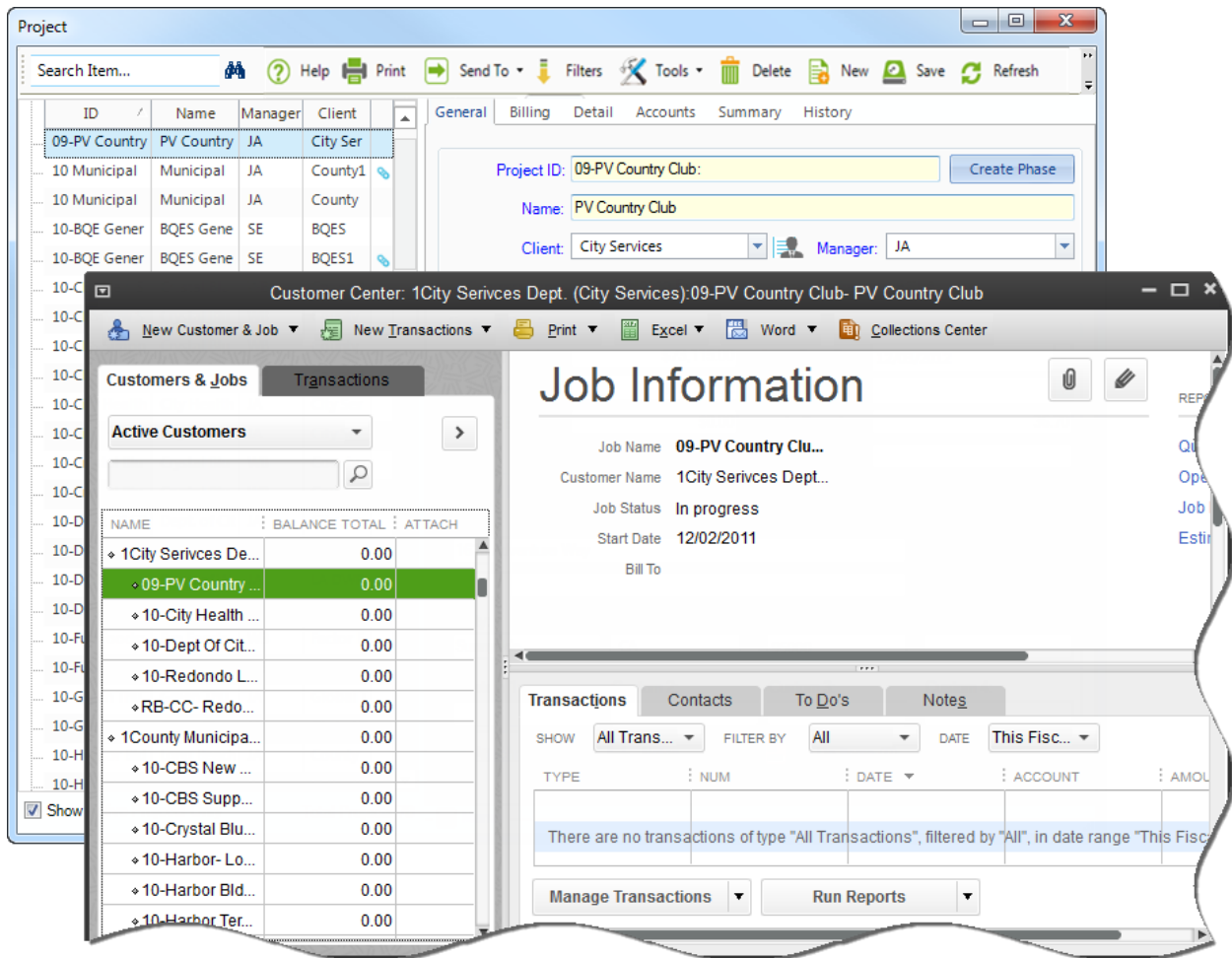


To avoid data duplication in case of existing users, use the BillQuick-QuickBooks Smart Match feature to link and un-link records between the two programs. You need to do it only once and then from that point onwards, data will sync accordingly. To save time, skip matching of inactive records.

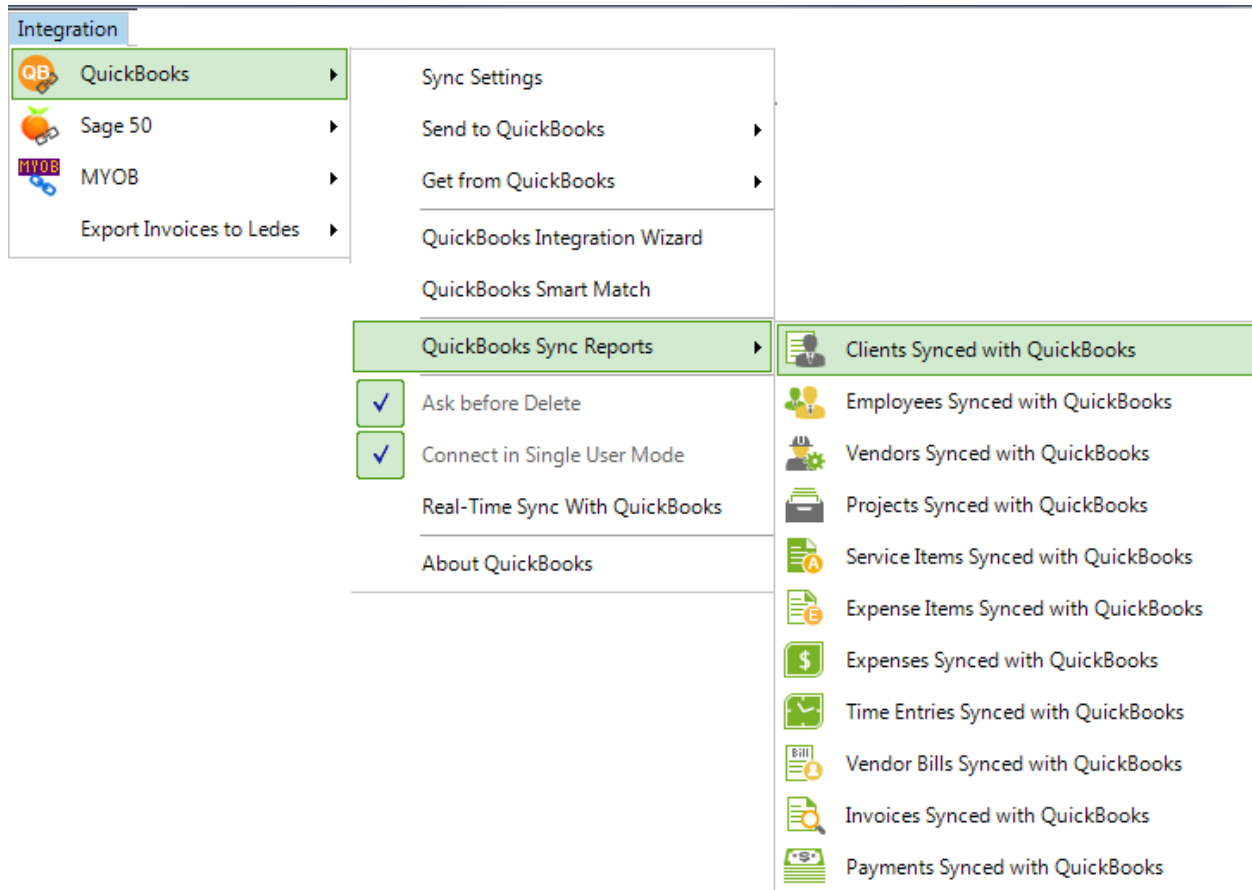


If you upgrade from QuickBooks desktop version to QuickBooks Online version, this will break the QBLinkID between BillQuick and QuickBooks desktop. You will not be able to sync data until they are linked again either manually via Smart Match or having a BQE Consultant do it for you.

BillQuick offers many ways to verify the transferred data. You can switch between corresponding screens in both programs and check the data.



As part of the integration feature, BillQuick also provides QuickBooks Sync Reports. Acting as audit reports to verify data transfer, they show which records are linked and unlinked between BillQuick and QuickBooks.



BillQuick also creates a log file that lists all records that were transferred from or to QuickBooks along with the exceptions.



Check the [BillQuick-QuickBooks Advanced Integration Guide](#) and BillQuick Help, BillQuick↔QuickBooks Integration section for details.

Day-to-Day Integration

After data verification, you may want to review your current synchronization settings to determine if they should be fine-tuned for day-to-day integration.

After initial integration, you may set integration rules so that master information is maintained in BillQuick and transfers only to QuickBooks. It is a good practice to maintain clients, projects, time and expenses, billing, accounts receivables, payments and reports in BillQuick. QuickBooks should be used for functions such as accounts payable, general ledger, banking, payroll and financial statements. The following best practices give an idea about the common breakdown of tasks you should be doing in BillQuick and QuickBooks.

Best Practices

Items	BillQuick	QuickBooks
Employees	✓	✓
Vendors		✓
Activity/Service items		✓
Expense/Charge Items		✓
Clients	✓	
Projects	✓	
Classes		✓
Estimates and Budgets	✓	
Service Fee Schedules	✓	
Chart of Accounts		✓
Time Entries	✓	
Employee Expenses	✓	
Vendor Bills	✓	
Invoices	✓	
Payments	✓	
Checks and Credit Card Bills		✓
Payroll Items		✓
Billing	✓	
Accounts Payable		✓
Accounts Receivable	✓	
Reports	✓	
Financial Statements		✓

Banking		✓
---------	--	---

Congratulations! You have gained a basic understanding of data integration between BillQuick and QuickBooks. To learn more, check the [BillQuick-QuickBooks Advanced Integration Guide](#), [BillQuick Help](#) or attend a [training](#) course.

For more information, visit us at www.bqe.com. If you have any trouble in using our integration tool, please contact BillQuick Support at (310) 602-4030 or Support@bqe.com. For other questions, please call us at (888) 245-5669 (US and Canada) or (310) 602-4020; or email Sales@bqe.com.



World Headquarters

North & South America

3825 Del Amo Boulevard, Torrance, CA 90503
United States of America

Tel: (866) 945-1595 (toll-free)
+1 (310) 602-4010

Email: sales@bqe.com
support@bqe.com

For more information, visit
www.bqe.com or call
(866) 945-1595.

www.bqe.com
www.twitter.com/BillQuick
www.facebook.com/BillQuick

©2005-2017 BQE Software Inc. All rights reserved. BQE, BQE logo and BillQuick logo are registered trademarks and/or registered service marks of BQE Software Inc. in the United States and other countries. Other parties' trademarks or service marks are the property of their respective owners.

Regional Offices

Australia, New Zealand & Asia

Level 40 North Point Towers, 100 Miller Street, North Sydney, NSW 2060
Australia

Tel: 1300 245 566 (toll-free)
+61 (02) 9657 1355

Email: aus-sales@bqe.com
aus-support@bqe.com

Europe, Middle East & Africa

Tel: +44 2033188111
Email: uk-sales@bqe.com
uk-support@bqe.com