

# BillQuick-SQL Server 2012 Express Installation

# CONTENTS

<b>SQL EXPRESS INSTALLATION</b>	<b>1</b>
SYSTEM REQUIREMENTS	1
INSTALLING SQL 2012 EXPRESS	1
<b>SQL EXPRESS CONFIGURATION</b>	<b>8</b>
<b>BILLQUICK DATABASE</b>	<b>11</b>


# SQL EXPRESS INSTALLATION

The Microsoft® SQL Server® 2012 Express software is the database engine you will use to store and report on data in BillQuick (Basic, Pro and Enterprise editions). It is available free from Microsoft and is a replacement for MSDE and SQL 2005.



We do not recommend using SQL Server 2005 that might be installed with your Windows Server because other software programs that rely on that SQL Server instance can break if you attempt to install service pack updates on them.

## System Requirements

You can check [Microsoft Download Center](#) to download Microsoft SQL Server 2012 R2 SP2. Click  to know about the system requirements and installation instructions.

### Hardware/Software Requirements

To know about the hardware and software requirements, go to [Microsoft Developer Network](#).

## Installing SQL 2012 Express

Please follow the steps below to install SQL Server 2012 Express edition. If you prefer, [click here to watch a video on installing SQL Server Express](#).

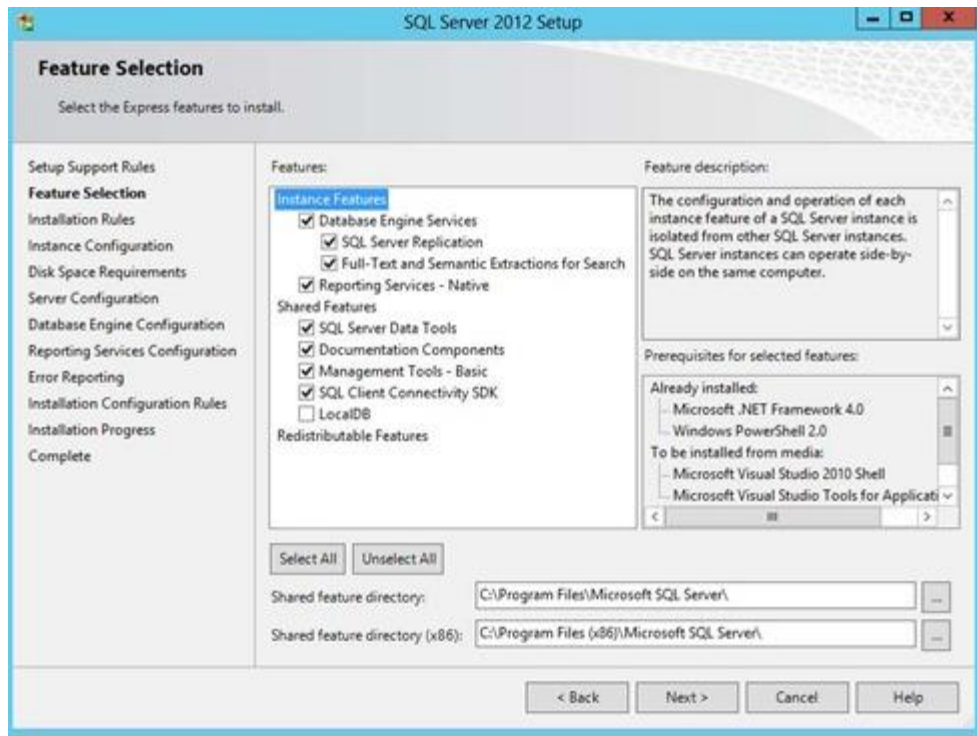
1. Download the appropriate SQL Server 2012 Express setup to your desktop.

Express Version	System
Microsoft® SQL Server® 2012 Express SP1	For 32-Bit machines, download the file: SQLEXPRTW_x86_ENU.exe  For 64-Bit machines, download the file: SQLEXPRTW_x64_ENU.exe

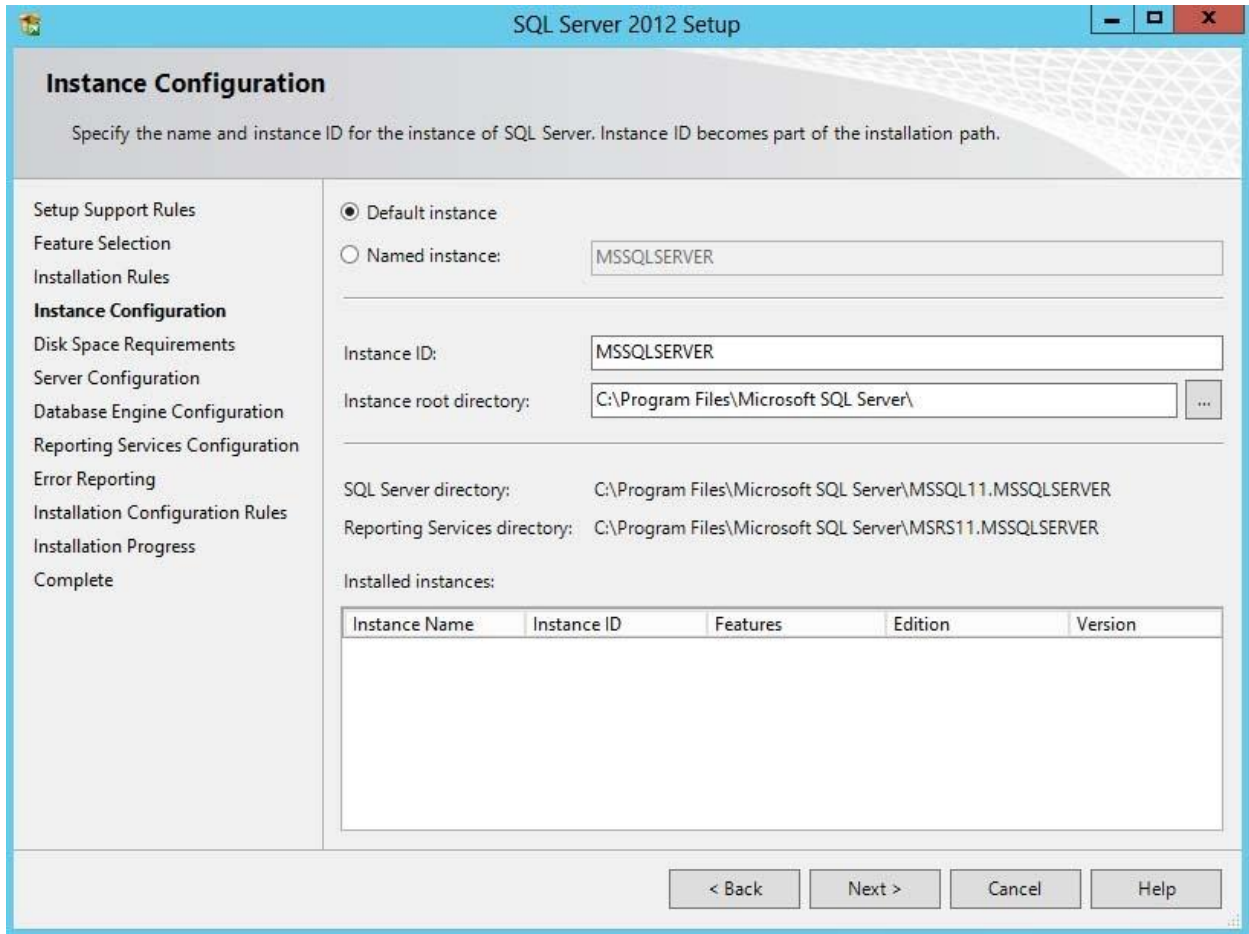
2. Run the setup. The SQL Server Installation Center displays.
3. Select 'New SQL Server stand-alone installation or add features to an existing installation' and then click Next to proceed.



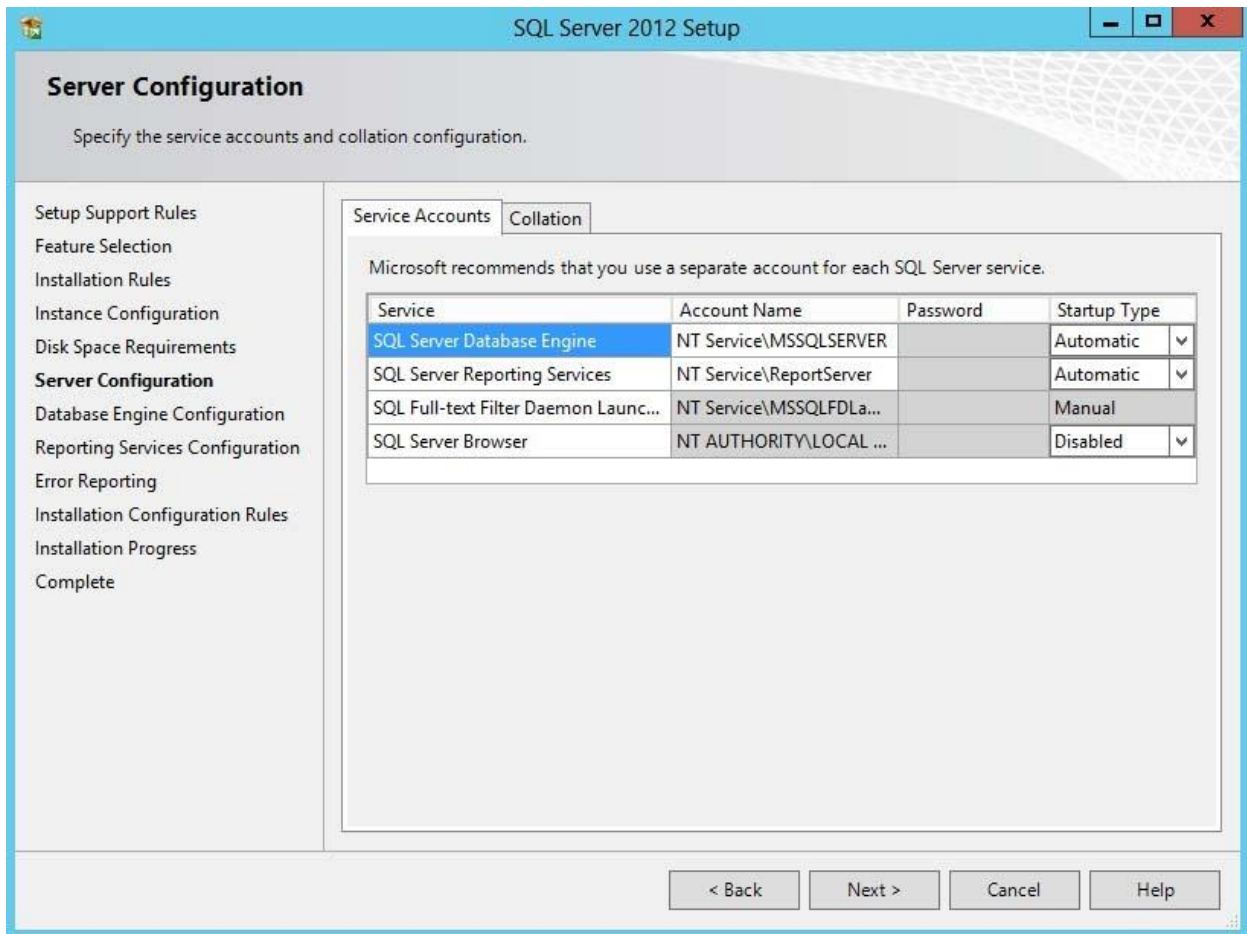
4. Read and accept the license agreement. Click Next.
5. Select the Express features you want to install (*as shown below*) and also the location where the SQL Server will be installed. Then click Next.




6. Review the name and ID for the instance of SQL Server. If this is the first instance of SQL Server on your computer, you might set it to 'Default instance'. However, if you already have another instance, use 'Named instance' and then enter a name for it. Click Next to proceed.

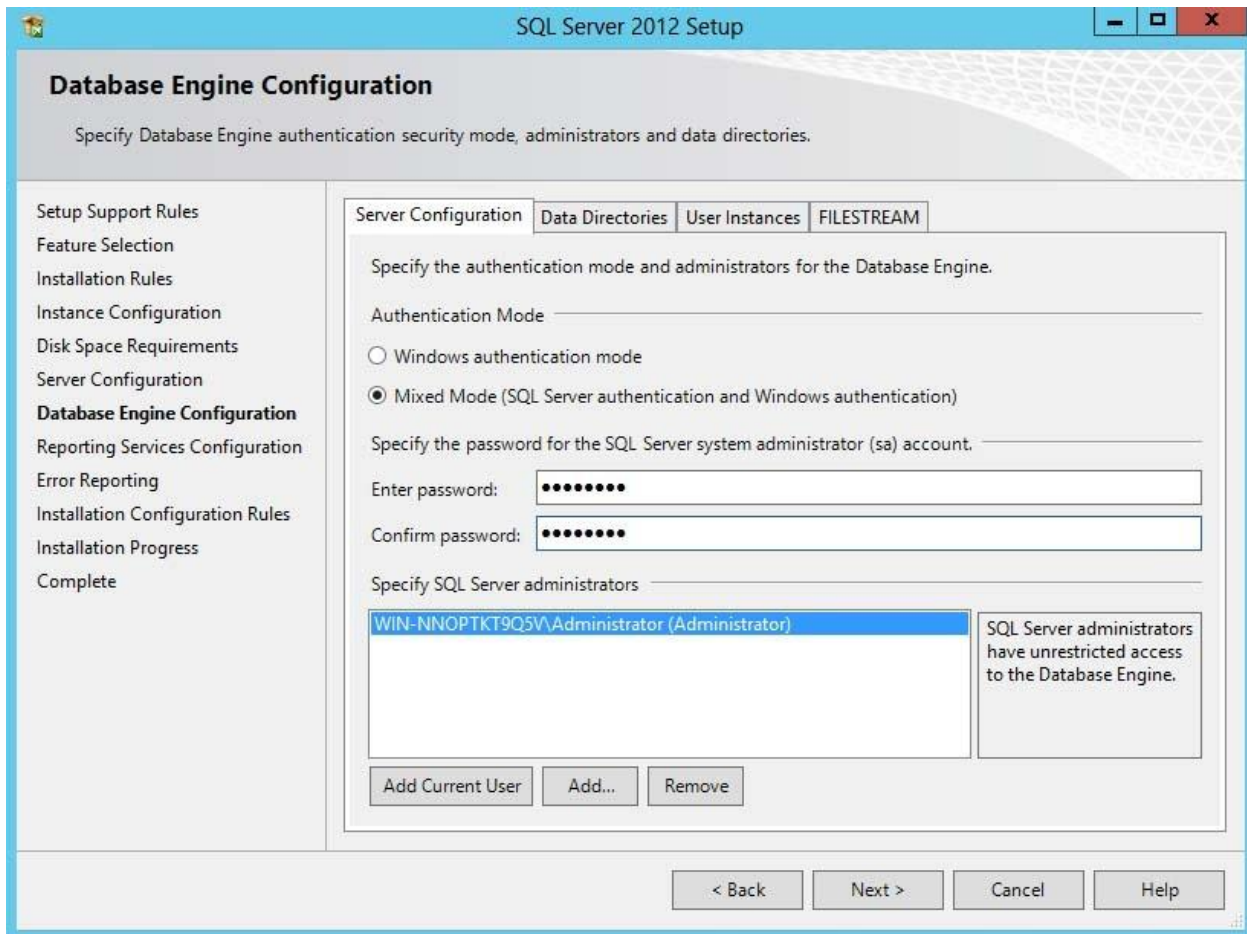


7. You can change the Windows services associated with this instance of SQL Server. Keep the defaults unless you want to specify different user accounts for the services. Microsoft recommends using a separate account for each service. You can also change the default collation settings if you are outside USA. Click Next.

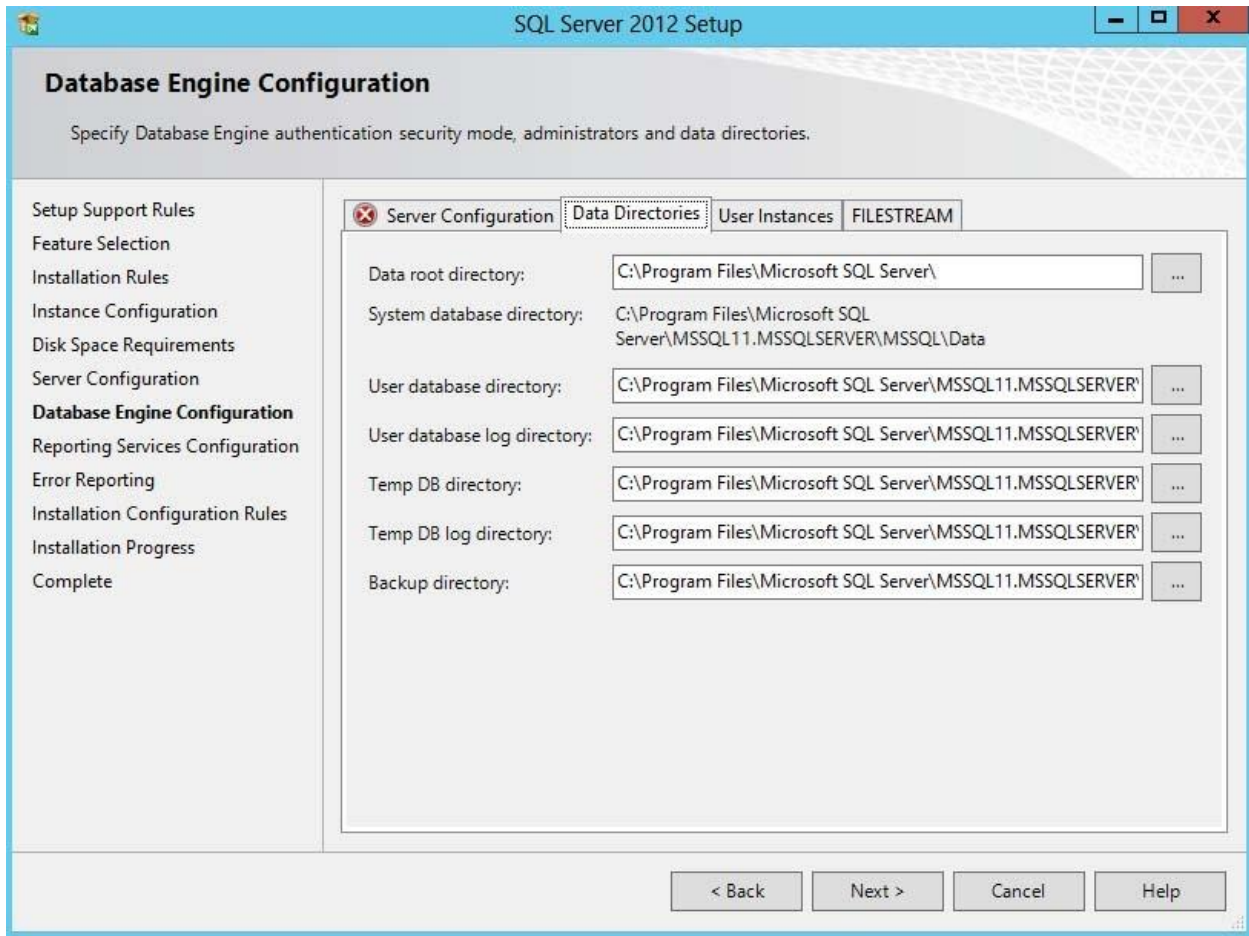


 We highly recommend that you write down the password. In case you forget it, you cannot recover it and will have to reinstall SQL Server.

8. On the Server Configuration tab, review the Authentication Mode and administrators that will be added to the Database Engine. You can choose the *Windows authentication mode* (where SQL Server will only authenticate using Windows accounts) or *Mixed Mode* (which will allow both Windows accounts and SQL accounts). In the latter case, set a password for the system administrator (sa) account. From here, you can also add or remove accounts that will be SQL Server administrators.

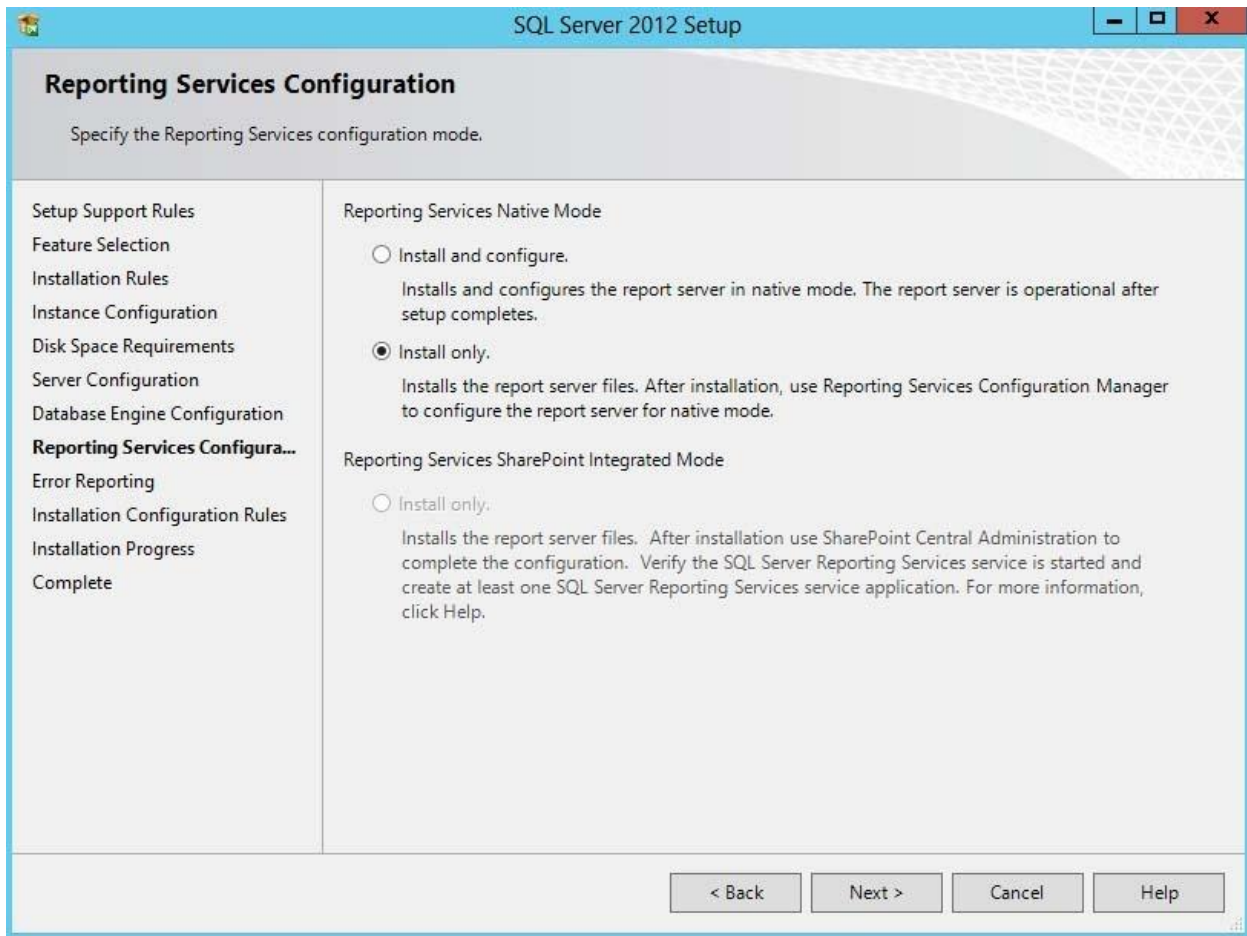


9. Move to the Data Directories tab. Here you can change the locations of various files that SQL will be using. We recommend putting the database and log folders on separate drives. Else, you can keep the default values. Click Next.

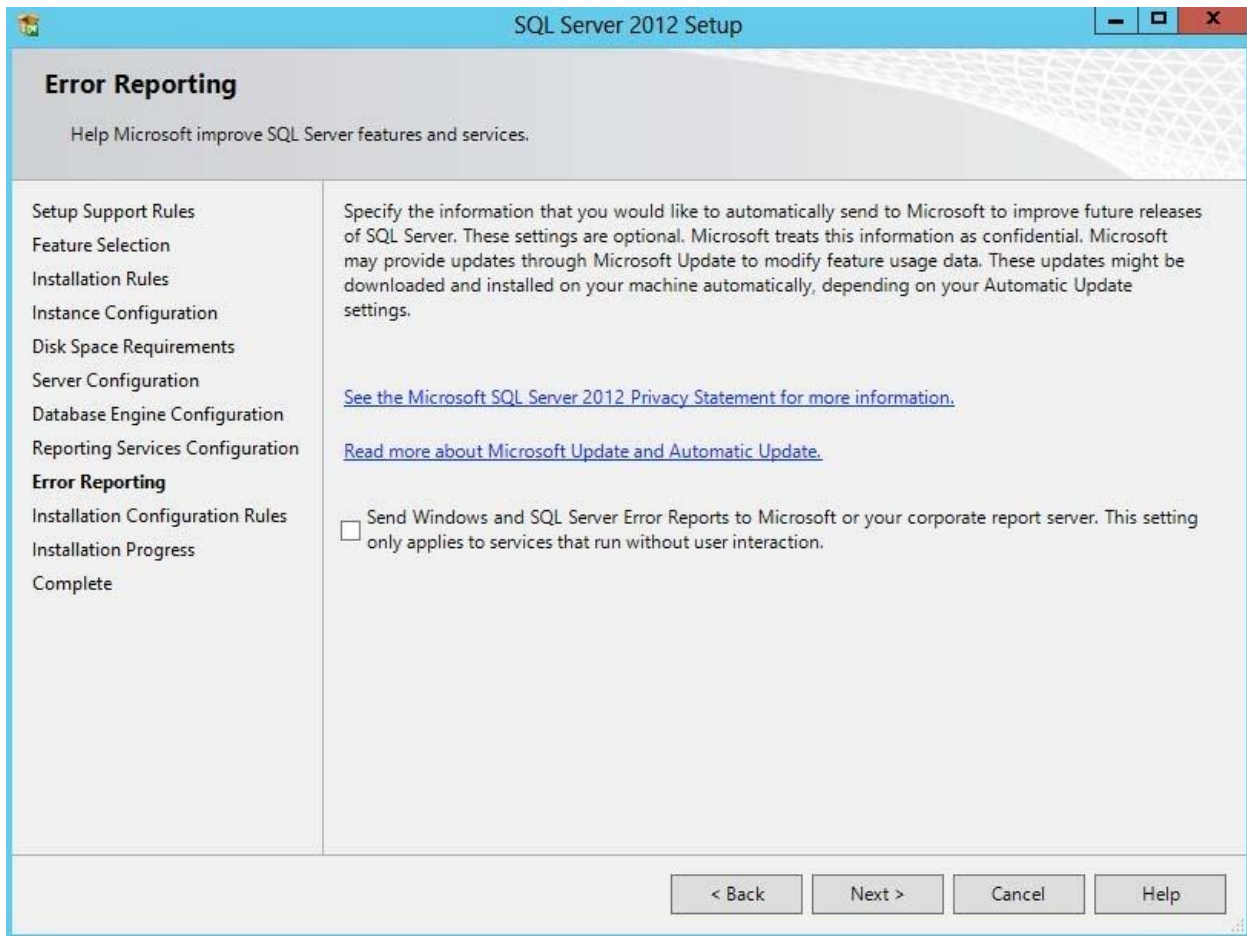


10. On the Reporting Services Configuration page, select the 'Install only' option if you do not need reporting services for now. You can configure this later, if needed. Click Next.





11. Review the Error Reporting settings. We encourage you to check this option so that Microsoft gets error reports and product feedback on an ongoing basis. Click Next.

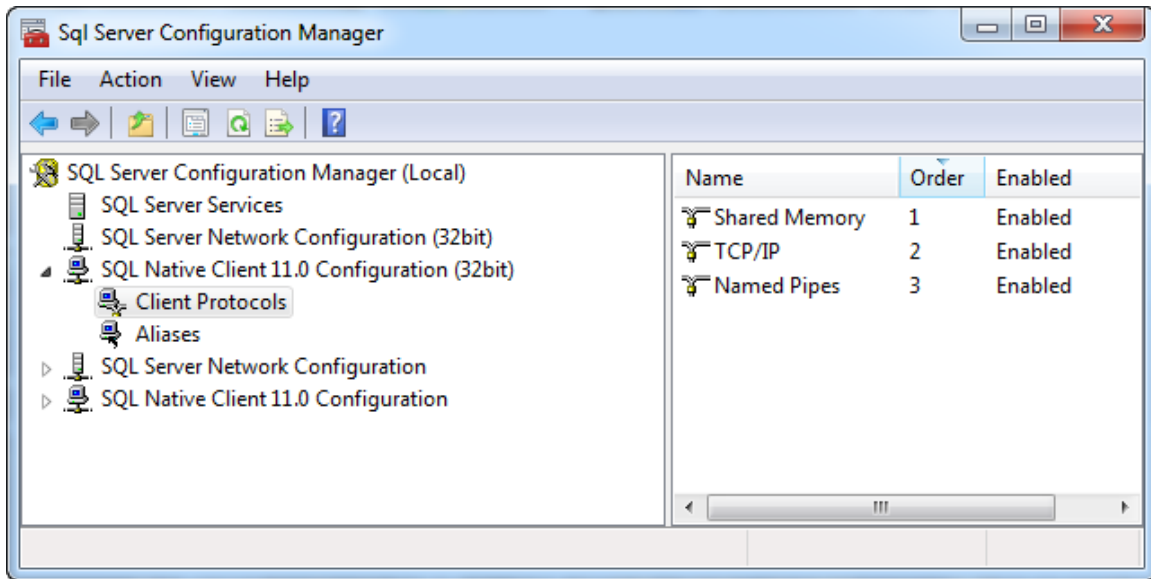


12. Now the SQL Server installation begins and may take some time. When it is complete, click Close. You must restart your computer.

## SQL EXPRESS CONFIGURATION

With the SQL Server 2012 Express edition installed, you can configure it to your system. Please follow the instructions below.

1. On the Windows taskbar, click Start. From the menu, select Program, Microsoft SQL Server 2012 > Configuration Tools > SQL Server Configuration Manager.



2. Click on SQL Server Network Configuration > Protocols for SQLEXPRESS.

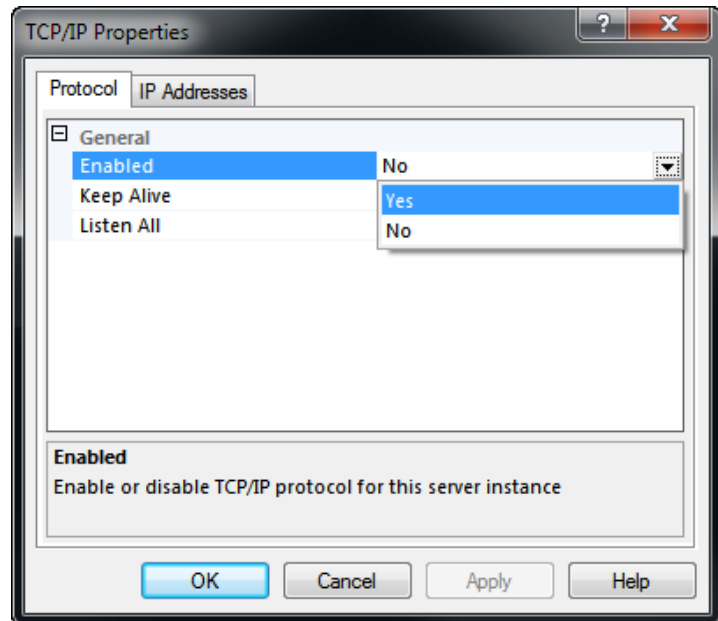
3. Double-click on TCP/IP. Under Properties set Enabled to Yes. Click Apply.

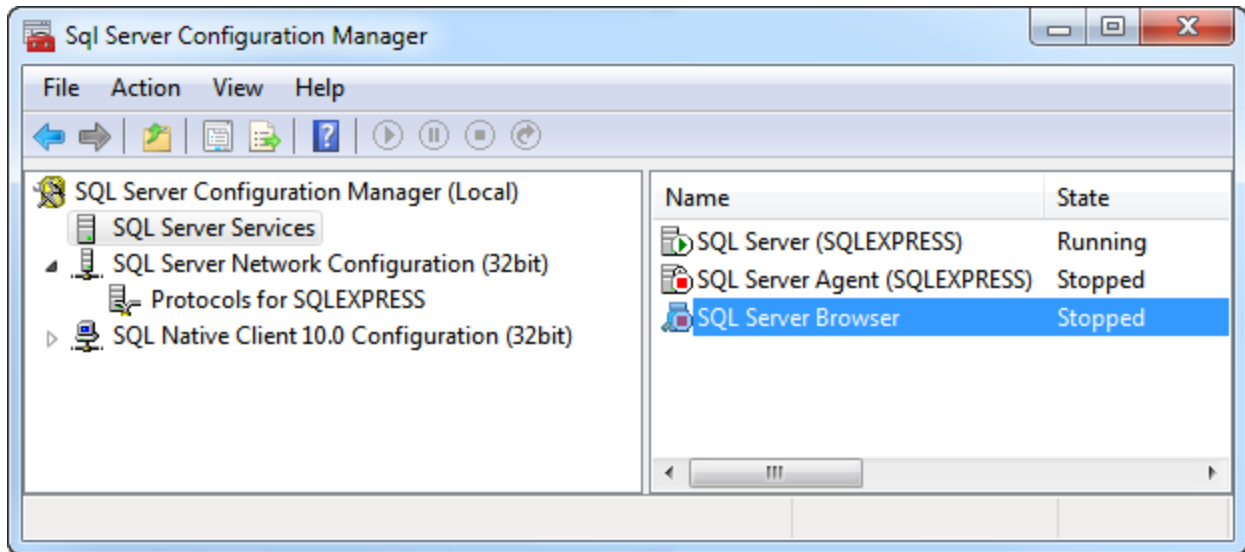
4. You are prompted to restart the service for changes to take effect. Click OK.

5. Double-click on Named Pipes. Under Properties set Enabled to Yes. Click Apply.

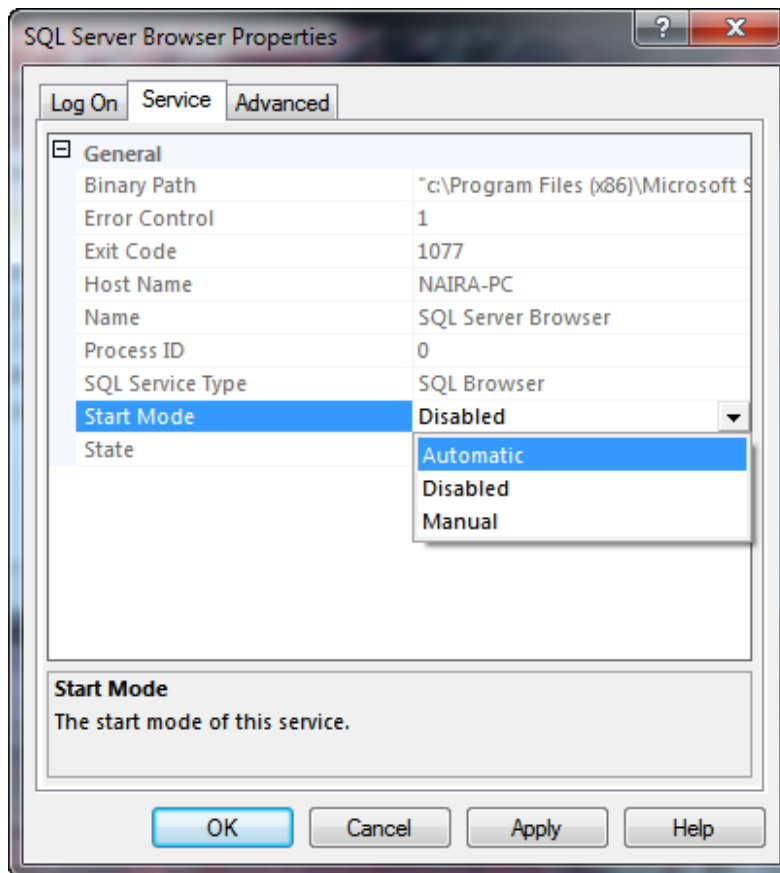
6. Again, you are prompted to restart the service for changes to take effect. Click OK.

7. Select SQL Server Services. Double-click SQL Server Browser to bring up its properties.





8. Click on the Service tab. Set Start Mode to Automatic.



9. Move to the Log On tab. Click Start, Apply and then OK.

## BILLQUICK DATABASE

After installing and configuring Microsoft SQL Express, you can install BillQuick on the primary computer (BillQuick Supervisor) or on other computers (BillQuick users). Please read the [BillQuick Getting Started Guide](#) for detailed information on how to install BillQuick and create an SQL database.

We recommend using SQL Server 2008 Express edition with BillQuick instead of SQL Server 2012 because of some limitations in the latter. Its maximum compute capacity used by a single instance is limited to lesser of 1 socket or 4 cores. To see the details, check the [Scale Limits of Express with Tools](#)

After creating a BillQuick SQL database, you can set up the company data, activate and license the product, and start using your BillQuick program. For details, please read the [BillQuick Getting Started Guide](#).



We do not recommend using SQL Server 2005/2008/2008R2/2012/2014 that might be installed with your Windows Server because other software programs that rely on that SQL Server instance can break if you attempt to install service pack updates on them. Also, as per the Microsoft documentation, it is not supported nor recommended to install SQL Server instances on a Windows Domain Controller.



If you receive error messages or have any other trouble connecting to the SQL Server during BillQuick installation, please look up our [Knowledge Base](#) for related issues. Else, contact our Technical Support at (310)602-4030.



## World Headquarters

### North & South America

3825 Del Amo Boulevard, Torrance, CA 90503

United States of America

Tel: (866) 945-1595 (toll-free)  
+1 (310) 602-4010

Email: [sales@bqe.com](mailto:sales@bqe.com)  
[support@bqe.com](mailto:support@bqe.com)

## Regional Offices

### Australia

Level 40 North Point Towers, 100 Miller Street, North Sydney, NSW 2060

Australia

Tel: 1300 245 566 (toll-free)  
+61 (02) 9657 1355

Email: [aus-sales@bqe.com](mailto:aus-sales@bqe.com)  
[aus-support@bqe.com](mailto:aus-support@bqe.com)

### Europe & Africa

Tel: +44 2033188111  
Email: [sales@bqe.com](mailto:sales@bqe.com)  
[support@bqe.com](mailto:support@bqe.com)

For more information, visit  
[www.bqe.com](http://www.bqe.com) or call  
(866) 945-1595.

[www.bqe.com](http://www.bqe.com)  
[www.twitter.com/BillQuick](https://www.twitter.com/BillQuick)  
[www.facebook.com/BillQuick](https://www.facebook.com/BillQuick)

©2013-2018 BQE Software Inc. All rights reserved. BQE, BQE logo and BillQuick logo are registered trademarks and/or registered service marks of BQE Software Inc. in the United States and other countries. Other parties' trademarks or service marks are the property of their respective owners.