

BillQuick-SQL Server 2014 Express Installation



CONTENTS

SQL EXPRESS INSTALLATION	1
SYSTEM REQUIREMENTS AND DOWNLOAD	1
INSTALLING SQL SERVER 2014 EXPRESS	1
SQL EXPRESS CONFIGURATION	8
BILLQUICK DATABASE	10

SQL EXPRESS INSTALLATION


The Microsoft® SQL Server® 2014 Express software is the database engine you will use to store and report data in BillQuick (Basic, Pro and Enterprise editions). It is available free from Microsoft and is a replacement for MSDE and SQL 2005.



We do not recommend using SQL Server 2005/2008/2008R2/2014 that might be installed with your Windows Server because other software programs that rely on that SQL Server instance can break if you attempt to install service pack updates on them. Also, as per the Microsoft documentation, it is not supported nor recommended to install SQL Server instances on a Windows Domain Controller.

System Requirements and Download

To know about the hardware and software requirements for installing SQL Server 2014, go to [Microsoft Developer Network](#).

You can check [Microsoft Download Center](#) to download Microsoft SQL Server 2014. Click  to know about the system requirements and installation instructions.

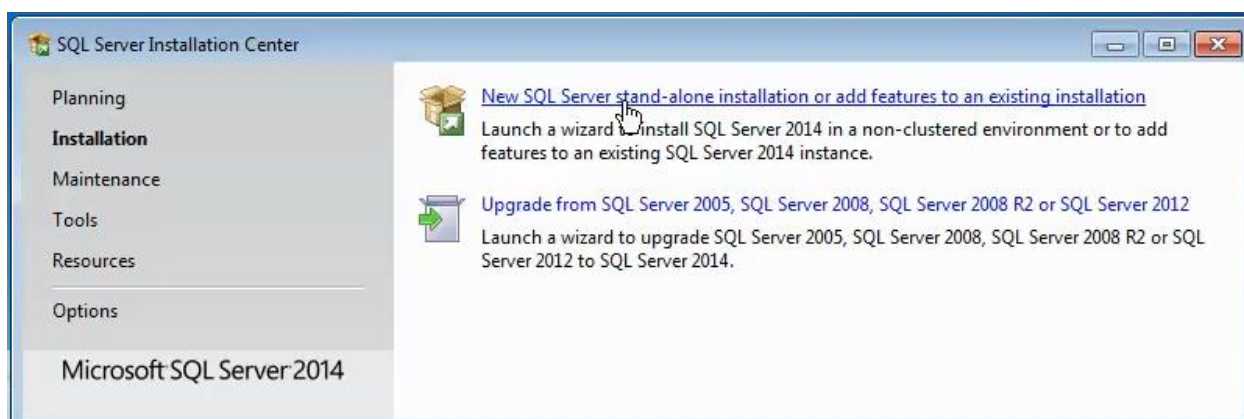
Installing SQL Server 2014 Express

Please follow the steps below to install the SQL Server 2014 Express edition. If you prefer, [click here to watch a video on installing SQL Server Express](#).

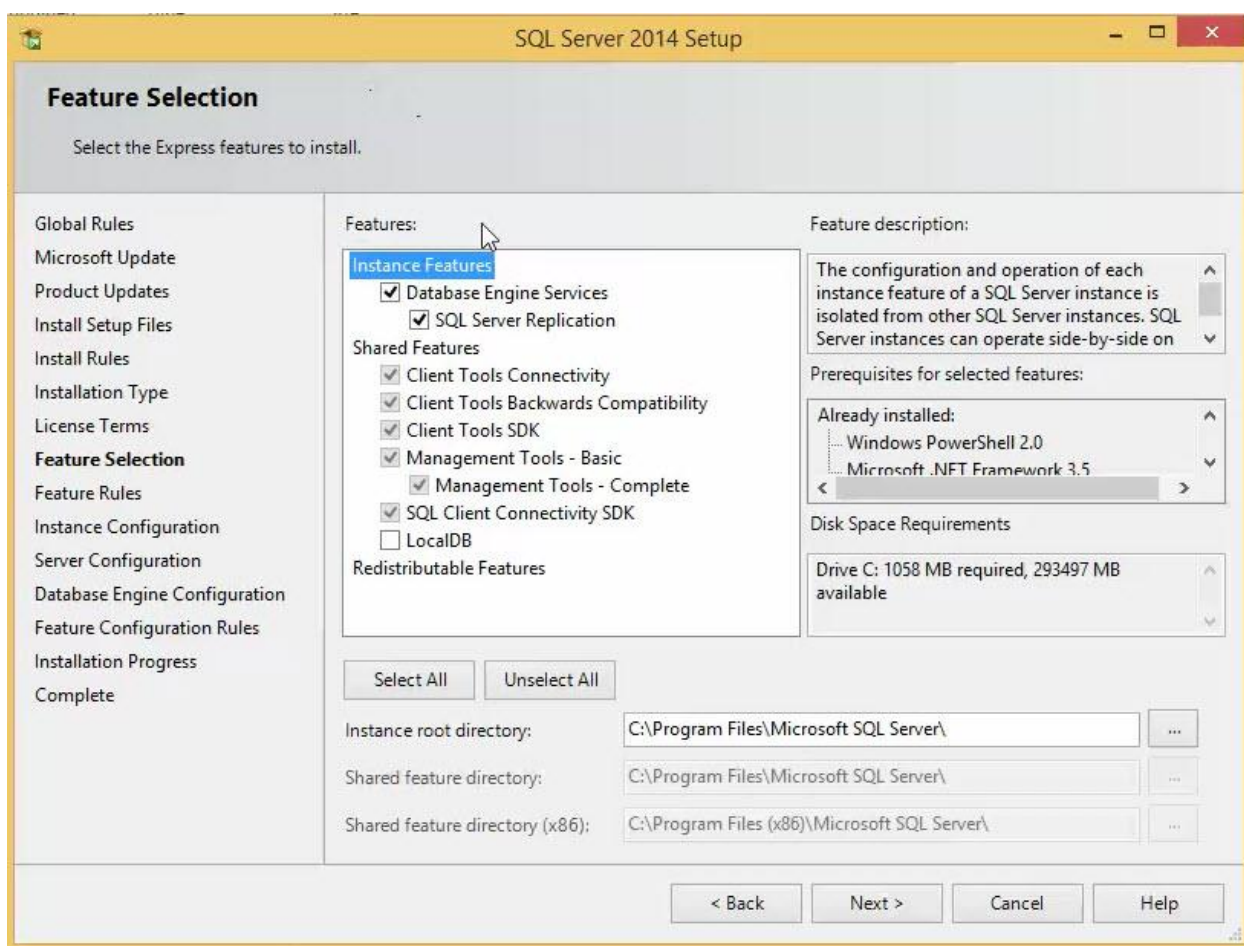
1. Download the appropriate SQL Server 2014 Express setup to your desktop.

Express Version	System
Microsoft® SQL Server® 2014 Express SP1	For 32-Bit machines, download the file: ENU\x86\SQLEXPRT_x86_ENU.exe For 64-Bit machines, download the file: ENU\x64\SQLEXPRT_x64_ENU.exe

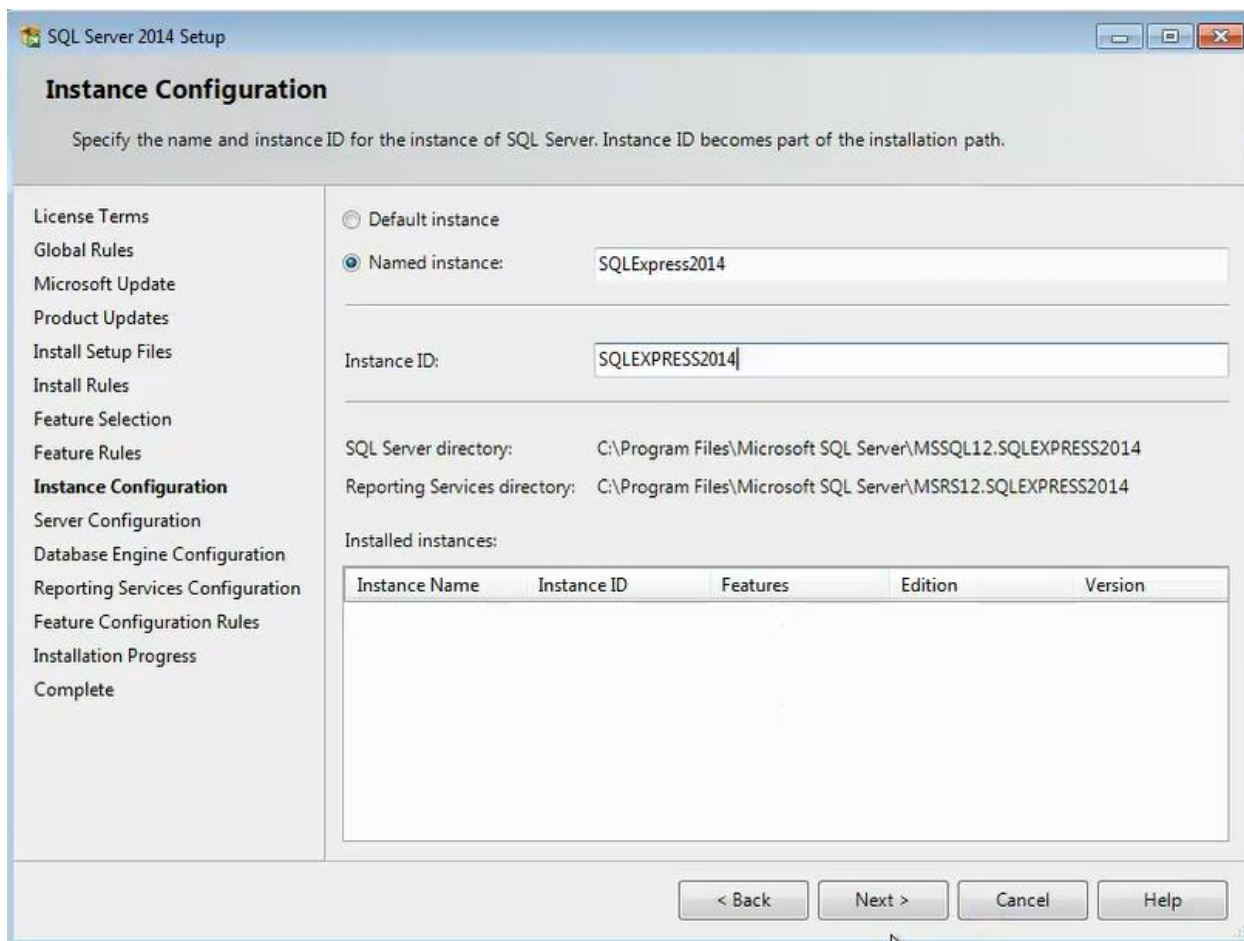
2. Run the setup. The SQL Server Installation Center displays.
3. Select 'New SQL Server stand-alone installation or add features to an existing installation' and then click Next to proceed.



4. Read and accept the license agreement. Click Next.
5. On the Feature Selection panel, select the Express features you want to install (*as shown below*) and the location where the SQL Server will be installed. Then click Next.



- Review the name and ID for the instance of SQL Server. If this is the first instance of SQL Server on your computer, you might set it to 'Default instance'. However, if you already have another instance, use 'Named instance' and then enter a name for it. Click Next to proceed.



SQL Server 2014 Setup

Instance Configuration

Specify the name and instance ID for the instance of SQL Server. Instance ID becomes part of the installation path.

License Terms
 Global Rules
 Microsoft Update
 Product Updates
 Install Setup Files
 Install Rules
 Feature Selection
 Feature Rules
Instance Configuration
 Server Configuration
 Database Engine Configuration
 Reporting Services Configuration
 Feature Configuration Rules
 Installation Progress
 Complete

☐ Default instance

☒ Named instance:

Instance ID:

SQL Server directory: C:\Program Files\Microsoft SQL Server\MSSQL12.SQLEXPRESS2014

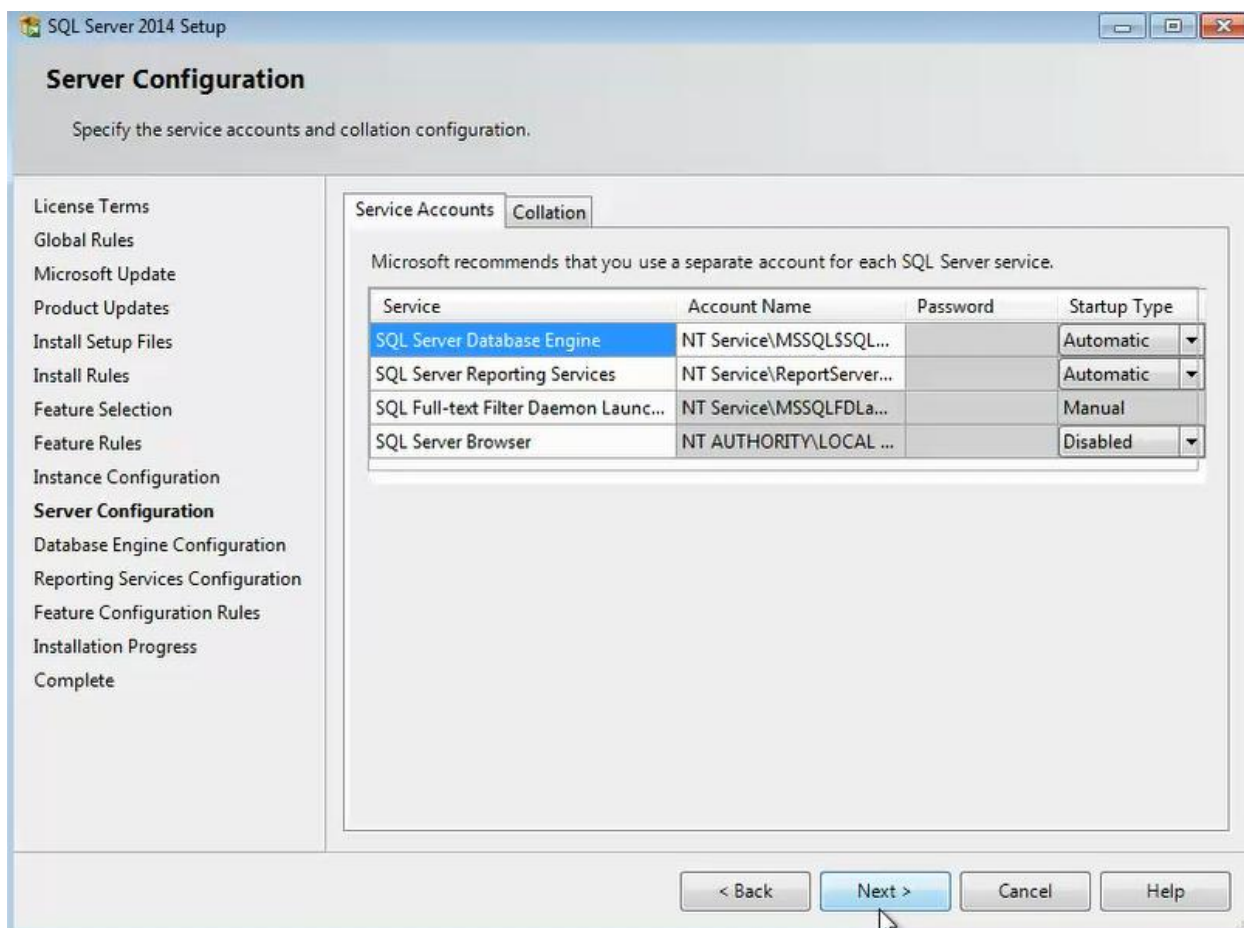
Reporting Services directory: C:\Program Files\Microsoft SQL Server\MSRS12.SQLEXPRESS2014


Installed instances:

Instance Name	Instance ID	Features	Edition	Version

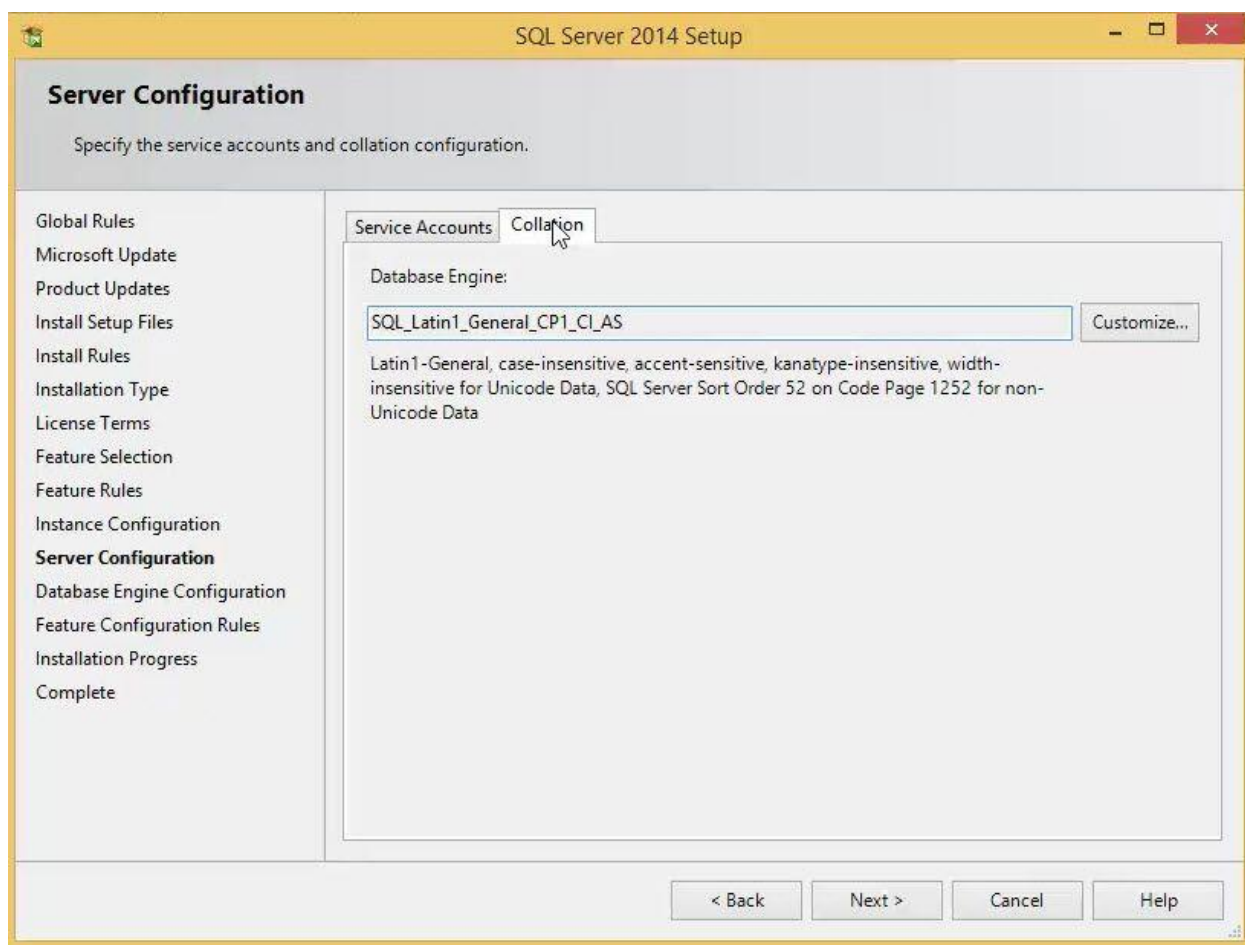
< Back Next > Cancel Help

- On the Server Configuration panel > Service Accounts tab, select Startup Type as Automatic for SQL Server Database Engine and SQL Server Browser. You can also change the Windows Account Name for each service listed on this screen. Keep the defaults unless you want to specify different user accounts for the services. Microsoft recommends using a separate account for each service. Click Next.

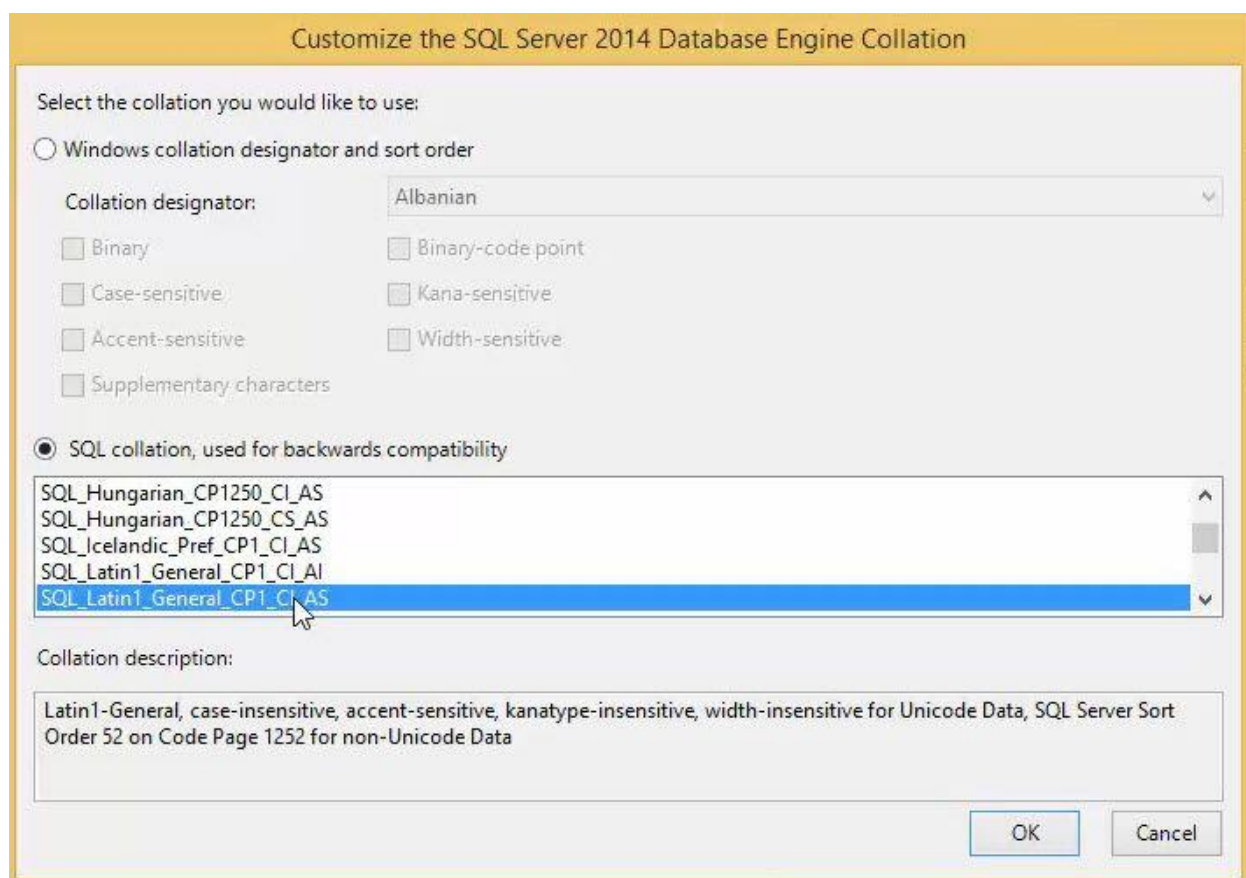


 If you change the service accounts being used, we highly recommend that you write down the user accounts and passwords. In case you forget, the BQE Support Team cannot recover them and will either have to change them to Windows Built-In accounts or ask you to reinstall SQL Server.

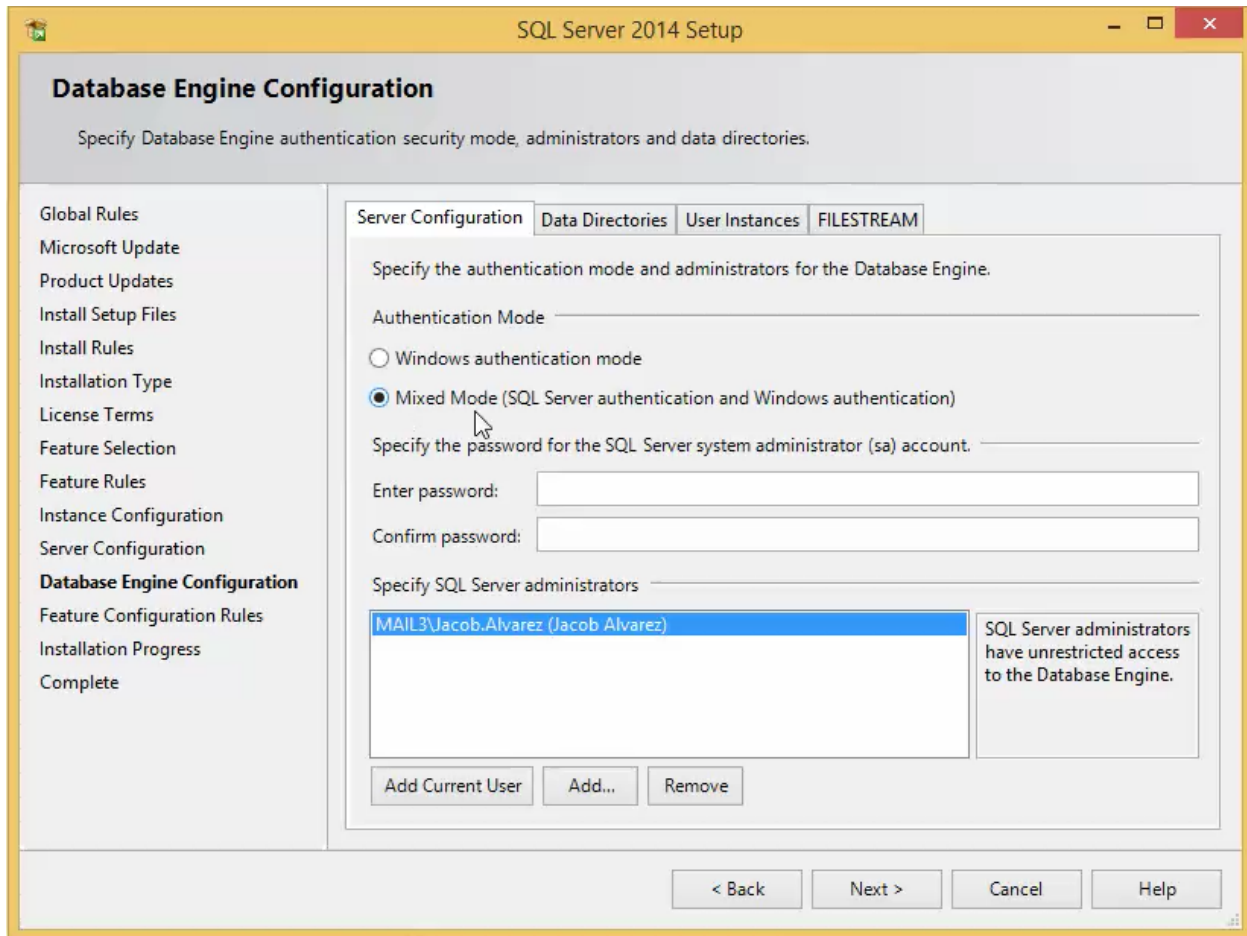
8. Move to the Collation tab. Here you need to set the Database Engine file as shown.




9. If your collation is not the same as shown above, click Customize to select the correct collation. When you have finished, click OK and move to the next panel.




10. On the Database Engine Configuration panel > Server Configuration tab, under the Authentication Mode, choose *Mixed Mode* (which will allow both Windows accounts and SQL accounts) and set a password for the system administrator (sa) account. From here, you can also add or remove administrator accounts for the SQL Server.



 We highly recommend that you write down the user accounts and passwords that you used in this screen. In case you forget them, BQE Support Team cannot recover them and will ask you to reinstall SQL Server.

11. Move to the Data Directories tab where you can change the folder locations that SQL Server will be using. Else, you can keep the default values and click Next.

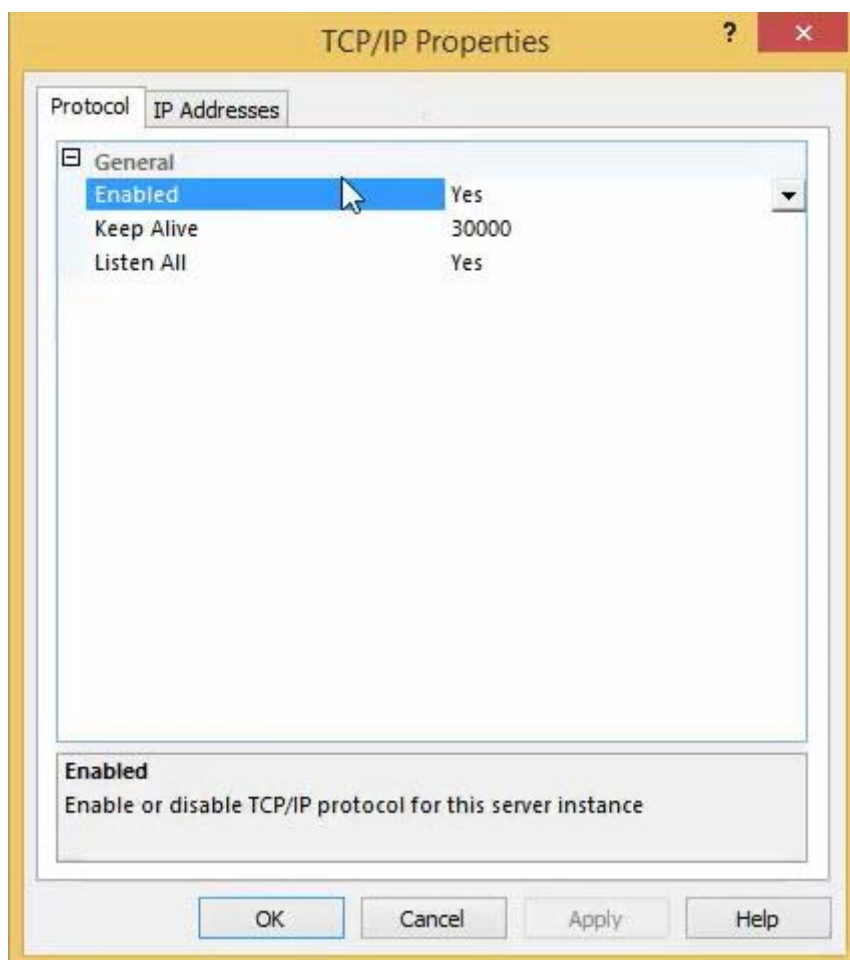
 We recommend placing the database and log folders on separate drives but it is not necessary for our software to work.

12. Review the Error Reporting settings. We encourage you to check this option so that Microsoft gets error reports and product feedback on an ongoing basis. Click Next.
13. The SQL Server installation begins and may take some time. When it is complete, click Close. You must restart your computer.

SQL EXPRESS CONFIGURATION

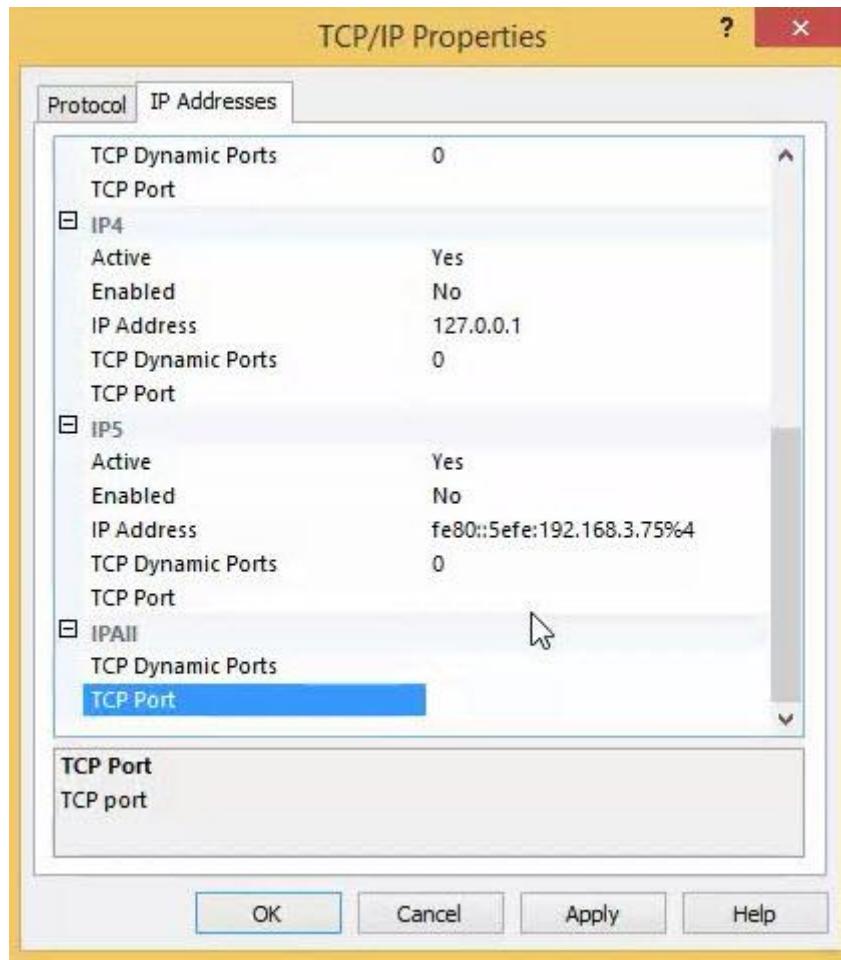
With the SQL Server 2014 Express edition installed, you can configure it to your system. Please follow the instructions below.

1. On the Windows taskbar, click Start. From the menu, select Program > Microsoft SQL Server 2014 > Configuration Tools > SQL Server Configuration Manager.
2. Click on SQL Server Network Configuration > Protocols for the instance name you created above (step 6 of SQL Express Installation). Typically, it will be Protocols for SQLExpress.
3. Double-click on TCP/IP. On the TCP/IP Properties > Protocol dialog, select Yes from the drop-down for Enabled. Click Apply.

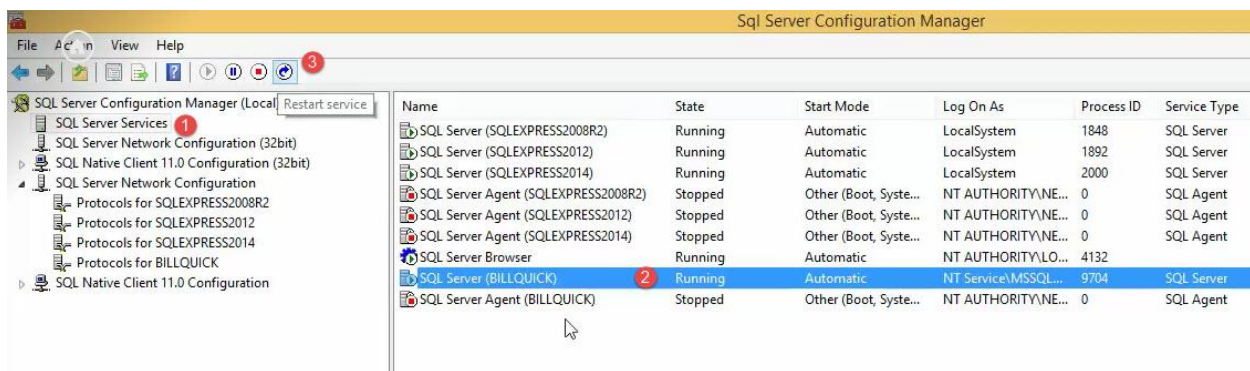


4. Move to the IP Addresses tab and scroll down to the IPAll section. Delete TCP Dynamic Ports and enter a TCP Port value. Usually, it is one port number in the following range: 1433 to 1450. Please

select one in this range and click Apply.



5. You are prompted to restart the service for changes to take effect. Click OK. Then Click OK again to go back to the SQL Server Configuration Manager screen.
6. Select SQL Server Services on the left and then select the SQL Server instance on the right that you created earlier (in step 6). *The instance name is in parenthesis.* When selected, click the Restart icon on the top.



BILLQUICK DATABASE

After installing and configuring Microsoft SQL Express, you can install BillQuick on the primary computer (BillQuick Supervisor) or on other computers (BillQuick users). Please read the [BillQuick Getting Started Guide](#) for detailed information on how to install BillQuick and create an SQL database.

After creating a BillQuick SQL database, you can set up the company data, activate and license the product, and start using your BillQuick program. For details, please read the [BillQuick Getting Started Guide](#).



If you receive error messages or have any other trouble connecting to the SQL Server during BillQuick installation, please look up our [Knowledge Base](#) for related issues. Else, contact our Technical Support at (310)602-4030.



World Headquarters

North & South America

3825 Del Amo Boulevard, Torrance, CA 90503
United States of America

Tel: (866) 945-1595 (toll-free)
+1 (310) 602-4010

Email: sales@bqe.com
support@bqe.com

For more information, visit
www.bqe.com or call
(866) 945-1595.

www.bqe.com
www.twitter.com/BillQuick
www.facebook.com/BillQuick

©2016-2018 BQE Software Inc. All rights reserved. BQE, BQE logo and BillQuick logo are registered trademarks and/or registered service marks of BQE Software Inc. in the United States and other countries. Other parties' trademarks or service marks are the property of their respective owners.

Regional Offices

Australia

Level 40 North Point Towers, 100 Miller Street, North Sydney, NSW 2060
Australia

Tel: 1300 245 566 (toll-free)
+61 (02) 9657 1355

Email: aus-sales@bqe.com
aus-support@bqe.com

Europe & Africa

Tel: +44 2033188111

Email: sales@bqe.com
support@bqe.com