

EngineerOffice ↔ QuickBooks Integration Guide 2015

CONTENTS

INTRODUCTION	1
SOFTWARE EDITIONS SUPPORTED	1
HOW INTEGRATION WORKS	2
INTEGRATION RULES	3
INTEGRATION SETTINGS	3
DATA INTEGRATION	5
INITIAL INTEGRATION	5
DATA VERIFICATION	7
DAY-TO-DAY INTEGRATION SETTINGS	9
BEST PRACTICES	9

INTRODUCTION

Data integration between EngineerOffice® (by BQE Software) and QuickBooks® (by Intuit) can make your time billing, accounting, and financial management tasks easier. The full-featured EngineerOffice helps you manage your company, whether your time, expense, billing and reporting needs are simple or you require complex billing, reporting and management capabilities. With EngineerOffice, you are equipped with a powerful office and project management solution for engineers. QuickBooks is a business accounting software that provides solutions such as general accounting, accounts receivable, accounts payable, online banking, reporting, payroll, and other functions. Integrated, EngineerOffice and QuickBooks deliver a virtual program that *ensures data accuracy, eliminates time-consuming duplicate manual entry, enhances flexibility, and increases control over your bottom line.*

Integration means data from one program transfers to another. This sharing offers many benefits. You control what data transfers to and from EngineerOffice using synchronization settings. Your preferences tell EngineerOffice exactly how you want it to interact with QuickBooks. EngineerOffice automatically creates smart connections using your settings and its built-in intelligence.

The goal of the **EngineerOffice-QuickBooks Basic Integration Guide** is to help you effectively integrate data between EngineerOffice and QuickBooks. EngineerOffice controls integration, enabling you to choose accounts, what data flows between the programs, and much more.

For detailed integration information, see the [EngineerOffice-QuickBooks Advanced Integration Guide](#).



You can contact us at support@EngineerOffice.com to help you with the data integration process. Check out [EngineerOffice Training](#) for a standard or custom training course on data integration with QuickBooks. BQE Software also offers [Consulting Services](#) in these areas.

Software Editions Supported

All EngineerOffice 2015 editions integrate with the following QuickBooks editions:

- QuickBooks Pro/Premier/Enterprise Solutions editions, including the Accountant's Edition (2010 and later)
- QuickBooks Canadian edition (2012 and later)
- QuickBooks UK edition (2012 and later)

QuickBooks Plus edition is not supported.

HOW INTEGRATION WORKS

It is helpful to understand the basics of the EngineerOffice↔QuickBooks integration, whether or not you have a technical background. This can help you visualize what is happening behind the scenes as EngineerOffice manages the transfer of data to and from QuickBooks.

There are some differences between QuickBooks and EngineerOffice that need to be understood in order to ensure a smooth and accurate data integration. EngineerOffice is *project-centric* and supports a hierarchical structure while QuickBooks is *client-centric* and uses a flat project structure. Each record common to EngineerOffice and QuickBooks shares a unique Link ID that identifies them as related. This *does not mean* data in both databases is *exactly* the same, only that they share common data. EngineerOffice Project records contain data and options that QuickBooks Job records do not and vice versa. What is important for integration are that the two programs share key data.



Back up your data in QuickBooks and EngineerOffice prior to data synchronization.

The table below shows the direction data can *potentially* flow between EngineerOffice and QuickBooks. Whether it flows in one direction or the other (or both directions) depends on choices made on the EngineerOffice-QuickBooks Integration Settings screen. You can determine how data flows *to* and *from* EngineerOffice and also which General Ledger accounts in QuickBooks are posted.

EngineerOffice Table Name	Dataflow	QuickBooks Table Name
Job Codes	↔	Service Items
Account Codes	↔	Other Charge Items
Contacts (Employees) *	↔	Employees
Contacts (Vendors)*	↔	Vendors
Contacts (Clients)*	↔	Customers
Projects	↔	Jobs
Time/Expense (Time Card)	↔	Time Tracking (Time Records)

Time/Expense (Expenses)	←	Bills and Checks
Invoices	↔	Invoices
Transactions (Payments)	↔	Payments

*When the Billing option is checked, all Contacts transfer as Customers.

 Also see the EngineerOffice Help for EngineerOffice↔QuickBooks Integration.

As you can see above, integration between EngineerOffice and QuickBooks is very comprehensive. Not only are invoices sent to QuickBooks to post revenue and receivables, the virtual database for the two programs includes clients, projects, employees, vendors, job codes, etc.

After initial integration, you can set integration rules so that master information transfers only from EngineerOffice to your accounting package. You would choose 'Do not Get Data' (i.e., turn off the flow of data) in the Get Settings. In other words, you decide to maintain master data in EngineerOffice only. It flows to your accounting package, updating its database and keeping information synchronized. You can be just as specific when assigning General Ledger accounts to service, expense and invoice items.

Bottom Line: The major benefit is that you do not have to re-enter EngineerOffice data into QuickBooks. EngineerOffice manages the process, using your synchronization settings.

Integration Rules

EngineerOffice handles most of the time and billing data differently from QuickBooks. To ensure accuracy and completeness of data transfer, EngineerOffice↔QuickBooks integration follows a set of rules. Some of these rules might not be relevant for the first-time data transfer but shall apply in future synchronization.

 Check out the [EngineerOffice-QuickBooks Advanced Integration Guide](#) for details.


Integration Settings

In EngineerOffice, you can specify data transfer rules and settings in the *EngineerOffice-QuickBooks Integration Settings* screen. You can also restrict the data sent from or transferred to EngineerOffice by setting filters. These settings apply company-wide and are used as defaults when you choose to synchronize data between EngineerOffice and QuickBooks.

A key step in the integration process is to assign general ledger (G/L) accounts to EngineerOffice job codes and other invoice items prior to the synchronization. This is because QuickBooks requires G/L accounts for

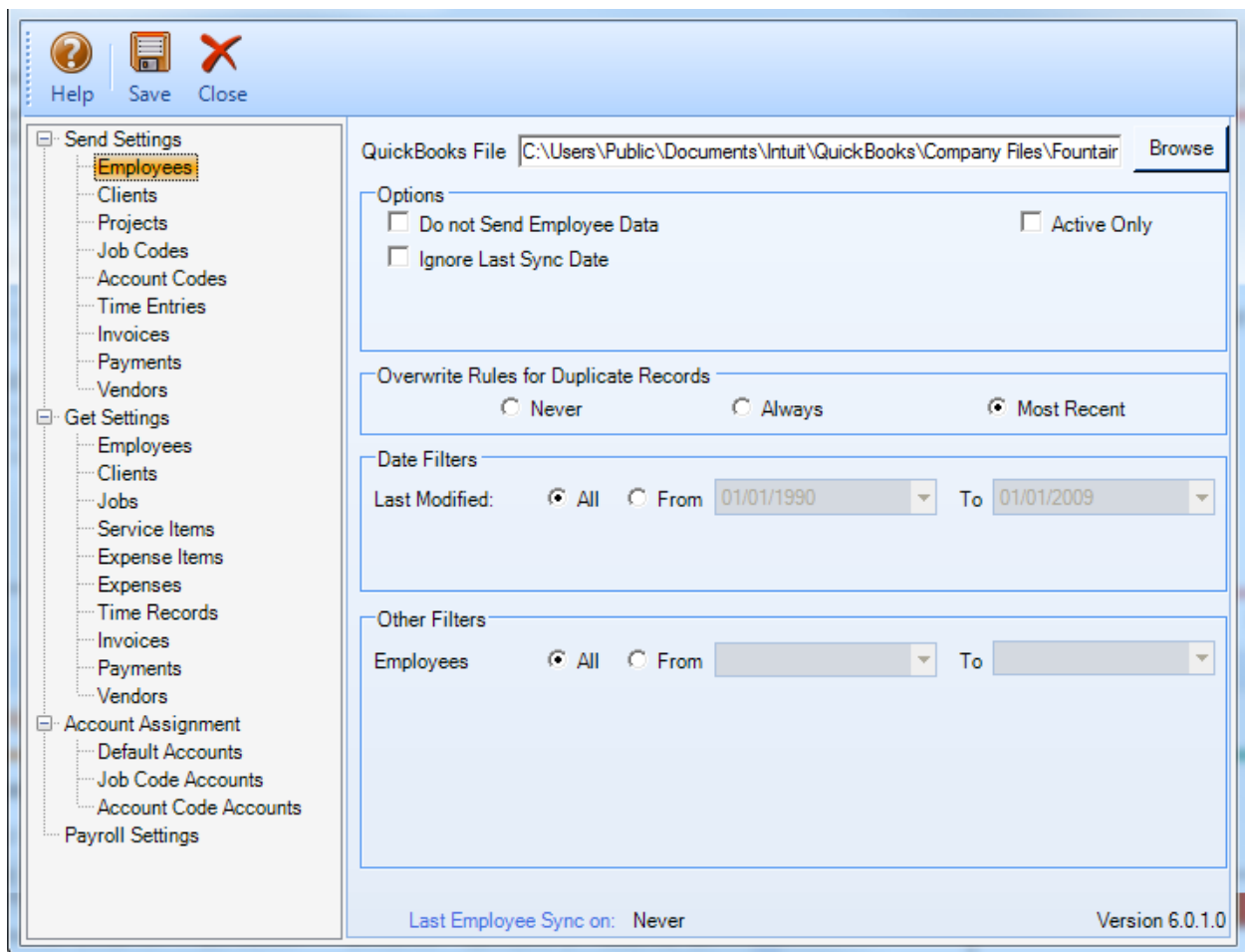
all items and transactions. This is done from the EngineerOffice-QuickBooks Integration Settings screen.

EngineerOffice also allows you to assign QuickBooks payroll items and accounts to its payroll items such as regular time, overtime, vacation, and so on for each employee.

 QuickBooks accounts are available for assignment in EngineerOffice after a connection has been established between the two programs.

With the EngineerOffice-QuickBooks Integration Settings screen, you can specify the following:

- Send Settings
- Get Settings
- Account Assignments
- Payroll Settings



DATA INTEGRATION

The initial integration populates the EngineerOffice or QuickBooks company database with information from the other program. Your initial synchronization settings determine what information and how much of it is shared between the programs. For example, you can decide to move QuickBooks data for only the last two years to EngineerOffice.

Both EngineerOffice and QuickBooks must be running during the integration process. You will first specify the synchronization options on the EngineerOffice-QuickBooks Integration Settings screen for the initial integration set up and then use the Get or Send menu to transfer each data type (e.g., Employee, vendor, etc.). You can do this by referring to one of the scenarios covered in this section that best fits your needs.



If you are new to EngineerOffice as well as QuickBooks, initial integration tasks will be completed after you have set up your information in both programs.

Initial Integration

QuickBooks users who are new to EngineerOffice should start by transferring information from QuickBooks to a new EngineerOffice database. After creating the EngineerOffice company file and setting preferences, you can initiate synchronization and check the transferred data.



You can contact us at support@EngineerOffice.com to help you with the data integration process. Check out [EngineerOffice Training](#) for a standard or custom training course on data integration with QuickBooks. BQE Software also offers [Consulting Services](#) in these areas.

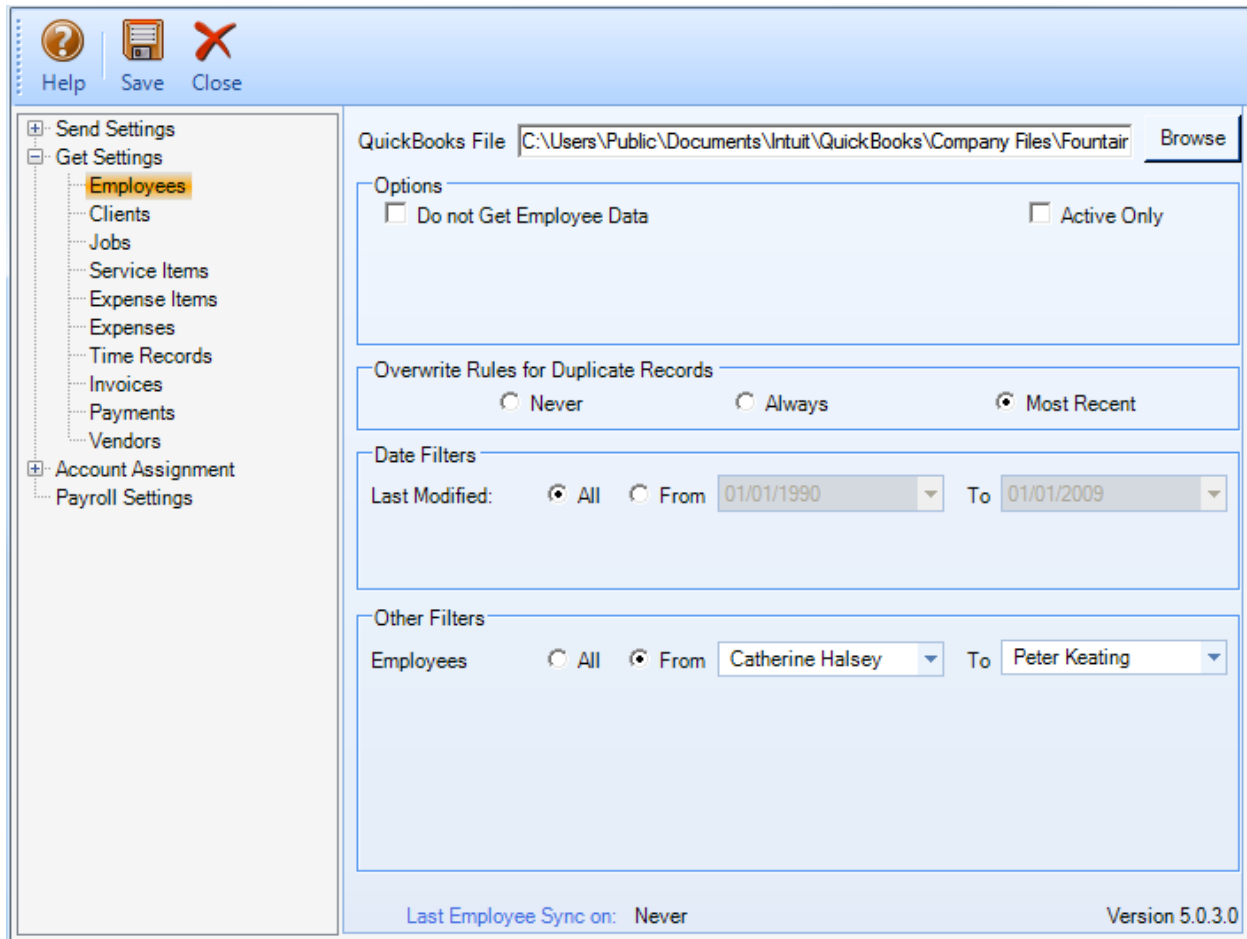
Typically, there are four possible scenarios for first-time integration:

- New EngineerOffice - Existing QuickBooks User
- Existing EngineerOffice - Existing QuickBooks User
- New EngineerOffice - New QuickBooks User
- Existing EngineerOffice - New QuickBooks User

The steps involved in the first-time integration are very simple:

1. Create a new company file or backup an existing company file in EngineerOffice or QuickBooks.
2. Grant access rights to EngineerOffice in your QuickBooks program.
3. Specify synchronization settings in the EngineerOffice-QuickBooks Integration Settings screen. Later, fine-tune these settings for day-to-day integration process.

- Get Settings or Send Settings for each EngineerOffice module (or skip the synchronization for some modules)
- QuickBooks account assignment for EngineerOffice items (activities, expenses, invoice line items)
- Payroll settings for EngineerOffice payroll items



4. Start data synchronization using EngineerOffice-QuickBooks Sync Options.

Below are the EngineerOffice Send and Get menu items and the corresponding QuickBooks screens.

EngineerOffice Get Menu Item	QuickBooks Screen
Employees	Employees
Vendors	Vendors
Clients	Customers
Projects	Jobs
Job Codes	Service Items
Account Codes	Other Charge
Time Entries	Time Tracking
Expense Entries	Bills and Checks
Invoices	Invoices
Payments	Payments

Data adjustments are needed in EngineerOffice after getting data from QuickBooks because EngineerOffice requires certain fields which might be optional in QuickBooks.

- **Employees:** When you get employees from QuickBooks, make sure to check their user and security settings in EngineerOffice.
- **Time Entries:** When you get time entries from QuickBooks, make sure to update the bill and cost rates in EngineerOffice because QuickBooks doesn't require them.
- **Alternate Contact:** Alt. Contact in QuickBooks corresponds to EngineerOffice Project Leader. If Alternate Contact is not specified in QuickBooks, EngineerOffice fills a placeholder 'FromQuickBooks' in the Project Leader field. Change that to the appropriate names.
- **Names:** Check the names of records (e.g., contacts or projects) transferred from QuickBooks. You can change them, if desired.
- **Data Accuracy:** Verify other data using reports in EngineerOffice and QuickBooks.

Data Verification

A standard procedure after initial synchronization of data between EngineerOffice and QuickBooks is to check the transferred data. This ensures that your information is accurate and complete before you begin normal processing.



EngineerOffice contains multiple processes to ensure accurate and complete data transfer. However, a setting in QuickBooks might have restricted the transfer of some data. Or, you might have inadvertently checked filters on the EngineerOffice-QuickBooks Integration Settings screen. Checking data before you begin normal processing ensures no surprises later.

After completing syncing of your data, you can do a Detailed or Summary data check. A Detailed check involves comparing data on EngineerOffice and QuickBooks screens side-by-side. A Summary check involves comparing EngineerOffice and QuickBooks generated reports.

Use the following checklist to ensure data integrity after syncing data between QuickBooks and EngineerOffice. The following table details the EngineerOffice and QuickBooks screens and reports to compare to make sure your data is correct.

Module	Detail Check	Summary Check
Employees	Compare the QuickBooks Employee Center with the EngineerOffice Contacts List	Compare the QuickBooks Employee Contact List with the Employee Address Book in EngineerOffice
Check Clients, Projects, Service and Expense Items	Open the respective screens in EngineerOffice and QuickBooks, and check the data in both programs.	Open the relevant reports in EngineerOffice and QuickBooks.
Check Time Entries	Select Enter Time (Use Weekly Timesheet) from the Employees or Customers menu in QuickBooks and open the Time/Expense > Time screen in EngineerOffice. Check the data in both programs.	Open the time reports in EngineerOffice and QuickBooks.
Check Expense Entries	Select Enter Bills from the Vendors menu in QuickBooks and open the Time/Expense > Expenses screen in EngineerOffice.	Open the expense reports in EngineerOffice and QuickBooks.
Check Invoices	Select Create Invoices from the Customers menu in QuickBooks and open the Billing screen in EngineerOffice.	Open the billing or receivables reports in EngineerOffice and QuickBooks.
Check Payments	Select Receive Payments from the Customers menu in QuickBooks and open the Billing screen in EngineerOffice.	Open the payment reports in EngineerOffice and QuickBooks.

Day-to-Day Integration Settings

After completing the initial synchronization, you need to review the current settings to determine if they should be fine-tuned for day-to-day integration.

It is a good practice to maintain clients, projects, time entries, billing, accounts receivables, payments, and reports in EngineerOffice. QuickBooks should be used for functions such as accounts payable, general ledger, banking, payroll and financial statements.

Best Practices

Items	EngineerOffice	QuickBooks
Employees	✓	✓
Vendors		✓
Job Codes/Service Items		✓
Account Codes/Charge Items		✓
Clients/Customers	✓	
Projects/Jobs	✓	
Chart of Accounts		✓
Time Entries	✓	
Expense Entries		✓
Billing	✓	
Vendor Bills		✓
Accounts Payable		✓
Accounts Receivable	✓	
Invoices	✓	
Payments	✓	
Bills and Checks		✓

Items	EngineerOffice	QuickBooks
Payroll		✓
Reports	✓	
Financial Statements		✓
Banking		✓

Congratulations! You now have an understanding of data integration between EngineerOffice and QuickBooks, how to ensure that the data transfer is accurate and how to verify which records have integrated. To learn more, check the [EngineerOffice-QuickBooks Advanced Integration Guide](#) or attend a [Training](#) course.

For more information, visit us at www.EngineerOffice.com. If you have any trouble using our integration feature, please contact EngineerOffice Support at (310) 602 4030 or support@EngineerOffice.com. For other questions, please call us at (888) 245-5669 (US and Canada) or (310) 602-4020; or email sales@EngineerOffice.com.



World Headquarters

North & South America

3825 Del Amo Boulevard, Torrance, CA
90503 United States of America

Tel: (855) 687-1028 (toll-free)
+1 (310) 602-4010

Email: sales@bqe.com
support@bqe.com

For more information, visit
www.bqe.com or call
(855) 687-1028.

www.bqe.com
www.twitter.com/EngineerOffice
www.facebook.com/EngineerOffice

©2015 BQE Software Inc. All rights reserved.
BQE, BQE logo and EngineerOffice logo
are registered trademarks and/or registered
service marks of BQE Software Inc. in the
United States and other countries. Other
parties' trademarks or service marks are the
property of their respective owners.

Regional Offices

Australia, New Zealand & Asia

Level 40 North Point Towers, 100 Miller Street, North Sydney, NSW
2060

Tel: 1300 245 566 (toll-free)
+61 (02) 9657 1355

Email: aus-sales@bqe.com
aus-support@bqe.com

Europe, Middle East & Africa

Crosshaven Co. Cork
Ireland

Tel: +44 2034119852

Email: uk-sales@bqe.com
uk-support@bqe.com