

# BQE CORE vs. Vantagepoint

## Why CORE Wins

### Designed for Growth, Built for Simplicity

Architecture and engineering firms need software that helps them move faster, not tools that slow them down with complexity, rigid workflows, and steep learning curves. While Deltek Vantagepoint promises an all-in-one solution, it often requires heavy customization, intensive (and expensive) training, and ongoing consultant support just to function effectively. Many firms find themselves buried in configuration, struggling to get clear insights, and relying on a system that wasn't built for everyday use across the entire team.

BQE CORE offers a smarter, more streamlined alternative. Designed by architects and engineers, CORE combines powerful project accounting, time tracking, resource planning, billing, and reporting in one intuitive platform. It's built for your whole firm—from design staff and project managers to principals and finance teams. With real-time visibility, automation that reduces busywork, and flexible tools that adapt to your workflows, CORE helps you focus on delivering great work and running a profitable business—without the overhead of complex software.



## Key Differentiators

		Deltek Vantagepoint
<b>Modern, Intuitive Interface for the Whole Team</b>	CORE is built with a clean, intuitive design that everyone can navigate easily, from principals to designers to bookkeepers, reducing training time and increasing daily efficiency.	Vantagepoint's interface is complex, hard to use, and intimidating for non-financial users, leading to poor firm-wide adoption.
<b>Faster, More Flexible Implementation</b>	BQE CORE is quick to implement, with built-in best practices, industry-specific templates, and flexible workflows that adapt to your firm's needs, without the heavy lift.	Vantagepoint often requires expensive training, outside consultants, months of configuration, and ongoing maintenance just to get up and running.
<b>Built Specifically For A/E Firms Of All Sizes</b>	CORE was started by an architect and an engineer who wanted better tools to manage their firms. It is laser focused on providing the best tools for A/E firms of all sizes from small firms to mid and large offices. It was designed and built for firms like yours.	Vantagepoint was built for the few very large firms with 500+ employees and complex operations. They don't build the tools or offer in-house training for the majority of A/E firms which are small to mid-sized businesses.



[Compared to Deltek Vantagepoint, CORE is] more of a speed boat than a cargo ship. The information's always there. It's always live. We can run reports and see where AR is. We can see if we're going up or down. CORE has ... allowed us to make decisions much quicker than in the past.

**Scott Roselius, AIA**  
Heights Venture Architecture + Design

# Customer wins moving from Deltek Vantagepoint to BQE:

- 1. Streamlined Approvals Across Teams:** CORE simplifies time, expense, and invoice approvals with centralized tools and real-time visibility—no more chasing down email threads or toggling between modules.
- 2. Simplified Phase-Based Budgeting:** Firms gain the ability to manage multi-phase projects with clear budget structures that are easy to build, track, and adjust—without relying on complex configuration.
- 3. Less Reliance on IT for Day-to-Day Tasks:** CORE empowers users to customize views, generate reports, and manage data independently, reducing bottlenecks and dependency on administrators or consultants.
- 4. Consistent Experience Across Devices:** Whether on desktop or mobile, CORE delivers a smooth, consistent user experience—something Vantagepoint users often lose when switching between platforms.

[Learn More About BQE CORE](#)

		Vantagepoint
Purpose-Built for A&E	 Yes. Designed by an architect & engineer, for architects & engineers	 No. Retrofits a legacy ERP framework for A&E firms
User Interface	 Clean, user-friendly design that's easy for the whole team to use.	 Clunky, complex, and hard to use interface with limited team adoption
Faster, Affordable Implementation	 Yes. Quick setup with minimal reliance on consultants	 No. Long, costly onboarding often requiring expensive consulting
True All-in-One Platform	 Yes. Integrated accounting, project management, resource planning, billing, time tracking, and CRM	 No. Additional modules are expensive and require extra customization
Flexible, Customizable Dashboards	 Yes. Easily build project, financial, & operations dashboards without IT	 No. Dashboards are rigid and require IT/admin setup
Seamless Mobile App	 Yes. Full mobile access to projects, time, expenses, tasks, and reports	 No. Limited mobile functionality, poor mobile usability
Real-Time Financial Dashboards	 Yes. Live project profitability, budgets, and cash flow visibility	 No. Limited real-time financial data with batch posting. Needs heavy reporting setup
Automated Workflow Tools	 Yes. Automated timecard reminders, billing workflows, and report delivery	 No. Heavy manual processes unless custom workflows are configured
Resource Planning	 Yes. Native, flexible resource planning and project budgets	 No. Resource planning data is disconnected from time tracking
Flexible Billing & Contract Options	 Yes. Supports hourly, fixed fee, NTE, phased contracts, retainers, & more	 No. Billing setups are rigid & limited
Real-Time Project Profitability Tracking	 Yes. Instantly track margins at project, phase, and task level	 No. Profitability visibility is harder & slower without heavy customization
Time Tracking With Ease	 Yes. Intuitive, easy to use time tracking your team will actually use	 No. Complex and challenging and a tool most users complain about
Invoicing Speed	 Invoicing is fast with intuitive templates that are easy to use	 Designed for complexity with so many options people struggle
Customized Reports & Templates	 Yes. Affordable and fast turnarounds	 Slow response time and prohibitively expensive



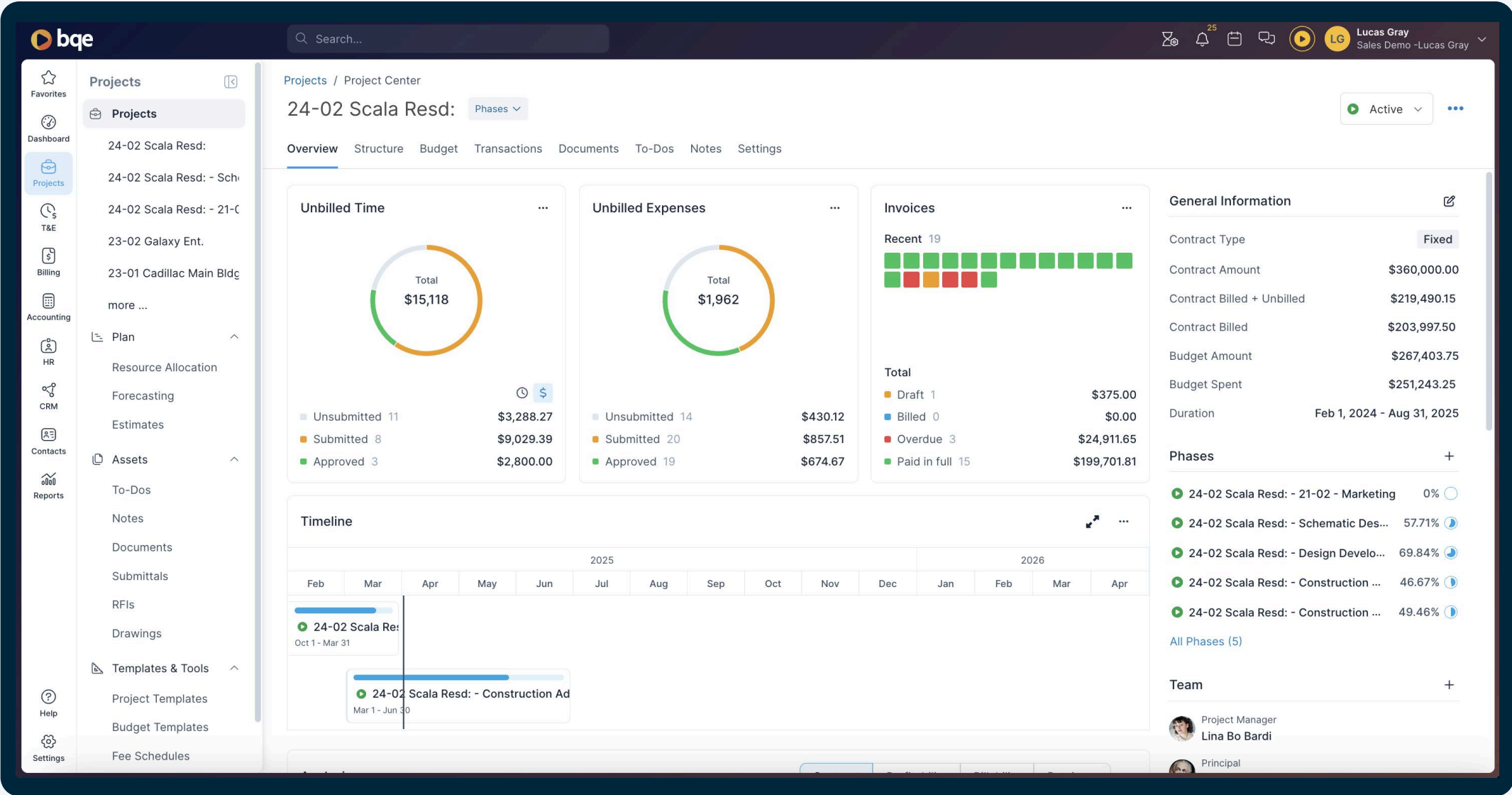
# Choose clarity, not complexity.

BQE CORE was purpose-built for architecture and engineering firms to manage projects and finances with confidence—not complexity. While Deltek Vantagepoint often demands steep training, expensive customization, and ongoing consultant support, CORE delivers robust functionality through an intuitive experience your entire team can adopt quickly—already trusted by thousands of A&E firms across the country.

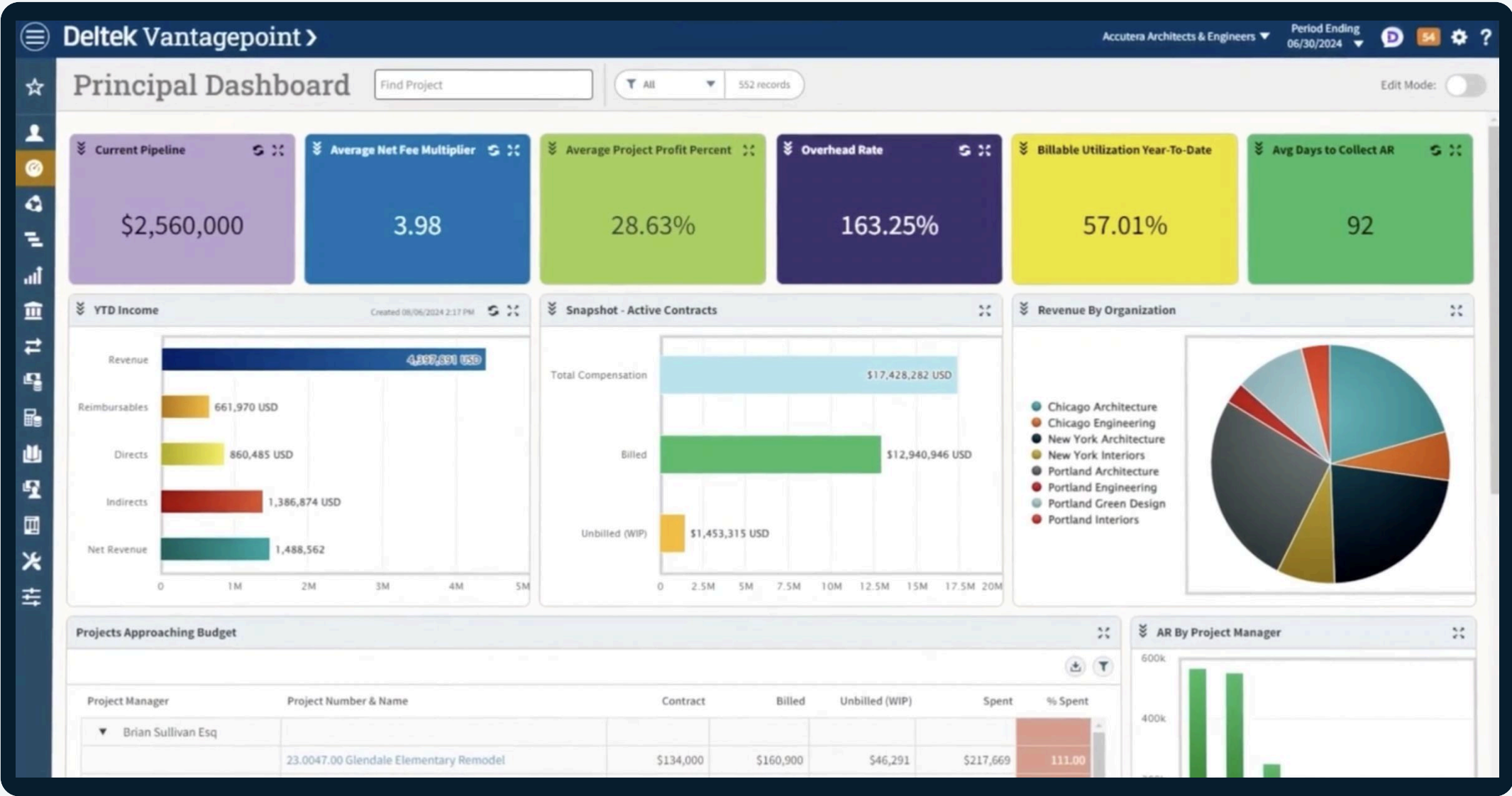
Every part of CORE—time tracking, billing, resource planning, project management, and reporting—is designed to be immediately usable and deeply connected. Meanwhile, Vantagepoint requires complex setup and multiple steps to perform routine tasks. CORE streamlines the experience, making it faster and easier for project managers, principals, and finance teams alike to get what they need, without digging through menus or relying on admins. The result: your firm operates with greater speed, clarity, and confidence across every project.

That’s why so many forward-thinking A&E firms are moving away from bulky systems like Vantagepoint and choosing CORE to modernize their operations. Sticking with complex, consultant-heavy software doesn’t just cost more, it costs time, momentum, and opportunities to grow. Your competitors are upgrading. The only question is: will you lead the change or fall behind?

Get a Customized Live Demo



BQE CORE Project Center Screenshot



Deltek Vantagepoint Project List Screenshot