

BQE CORE vs. Deltek Ajera

Why CORE Wins

Designed to Empower

Running an architecture or engineering firm is challenging enough without outdated, complex software slowing you down. You need a solution that works for you, not one that requires endless customization, costly consultants, and frustrating workarounds. Many firms using Deltek Ajera find themselves stuck in a system that overcomplicates simple tasks, limits flexibility, buries necessary reports, and demands too much from their team just to keep things running.

BQE CORE is built for your whole team, from principals and project managers to designers and bookkeepers. Unlike Ajera, which was built primarily for accountants, CORE delivers intuitive workflows, effortless time tracking, accessible real-time reports, and smart automation that everyone will use. It empowers your financial staff while making life easier for the rest of your firm. With the agility, scalability, and depth today's A&E firms need, BQE CORE helps you streamline operations, gain clarity, and focus on the work that matters, without getting lost in administrative chaos.



Key Differentiators

	The BQE logo, featuring a stylized orange and yellow play button icon followed by the lowercase letters "bqe" in a bold, sans-serif font, and the word "CORE" in a smaller, grey, sans-serif font.	Deltek Ajera
Modern User Interface & Ease of Use	Built to benefit your entire team, with a modern design that works on all devices. Plus we're there to help you every step of the way, through consistent updates and over 100 software developers actively improving the product.	Dated software that your team hates using. With poor design and minimal investment over the last decade customers know Ajera is being sunset. And when you need help, it's expensive.
Data Connectivity	Seamlessly integrates project management, time tracking, invoicing, and financials. No double-entry, disconnected workflows, or wasted time searching for reports. Your financial team will love it.	Data silos cause inefficiencies. Financial data and project details don't sync seamlessly, leading to extra work, wasted time, and errors. This is frustrating for everyone.
Better adoption across the team	Great for finance teams. Game changing for project management. Intuitive dashboards give project managers real-time insights into budgets, hours, and progress, while automated notifications help prevent overages and keep the team on task.	Minimal project management tools, while simple things like notifications require custom-built widgets and knowledge of SQL programming. Plus, we often here Ajera listed in exit surveys as a reason when employees leave firms.



[Compared to Deltek, CORE is] more of a speed boat than a cargo ship. The information's always there. It's always live. We can run reports and see where AR is. We can see if we're going up or down. CORE has ... allowed us to make decisions much quicker then in the past.

Scott Roselius, AIA
Heights Venture Architecture + Design

Customer wins moving from Deltek Ajera to BQE:

- 1. Seamless Client Relationship Management:** CORE’s built-in CRM helps firms track leads, manage client relationships, and streamline proposals—features Ajera lacks, keeping your business development organized and effective.
- 2. Built for the Whole Team:** Unlike Ajera, which is finance-centric, BQE CORE is designed for architects, engineers, project managers, and your finance team, making firm-wide adoption easy and intuitive. Retain your top talent by giving them a tool that helps them succeed.
- 3. Faster, More Accurate Invoicing:** CORE’s billing review process and real-time project data streamline billing, eliminating manual work and delays so firms get paid faster with less effort.
- 4. Greater Flexibility & Control:** CORE offers customizable overhead multipliers, multiple utilization reporting methods, and automated report scheduling—insights and control Ajera lacks.

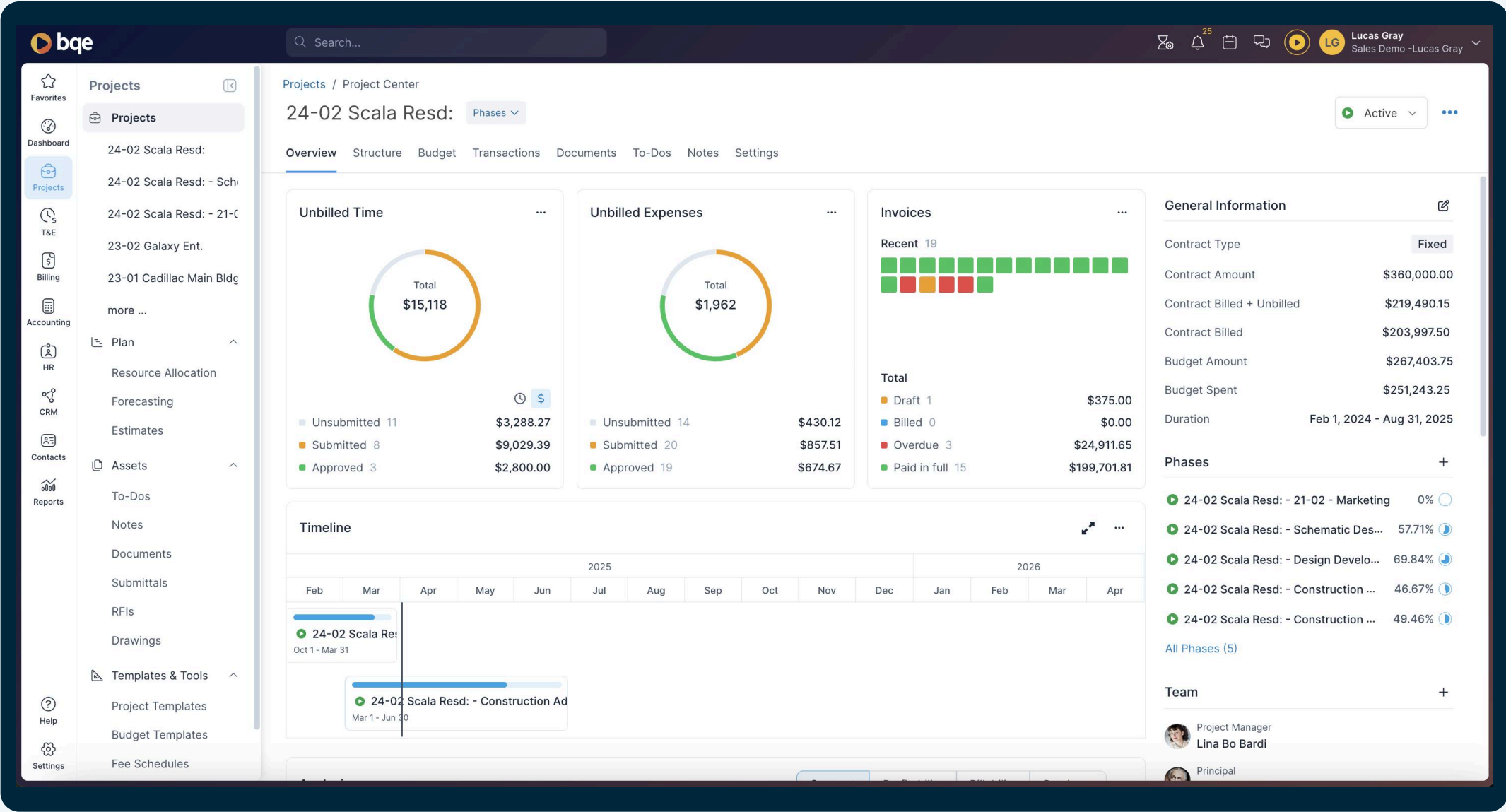
Learn More About BQE CORE

	bqe CORE	Deltek Ajera
Integrated CRM	✔ Yes, with the ability to build quotes & proposals	✘ No
Flexible Billing Types	✔ Yes. Including billing schedules & hourly not to exceed	✘ No. Billing schedules require clunky workarounds, and no HNTE billing
PTO Request Management	✔ Yes	✘ No
Integrations	✔ Yes. Office 365, Google, Zapier, Quickbooks, plus an open API	✘ No
Bank & Credit Card Feeds	✔ Yes	✘ No
Search Function	✔ Yes. Find any transaction by searching by amount or text	✘ No
General Ledger Flexibility	✔ Yes. Multiple ledgers for income, accounts receivable and payable	✘ No
Task Management	✔ Yes	✘ No
Data Connectivity	✔ Yes. Automatic sync from projects to accounting	✘ No. Manual data transfer
Overtime Calculations	✔ Yes. Fully Automated	✘ No. Manual data entry & calculations
Report Scheduling	✔ Yes. Automated	✘ No
Timecard Monitoring	✔ Yes. With automated reminders	✘ No
Financial Reports Drill Down	✔ Yes	✘ No
Mac + PC	✔ Yes. Fully accessible on all devices for both platforms	✘ No. Have to purchase additional software to work on Macs.

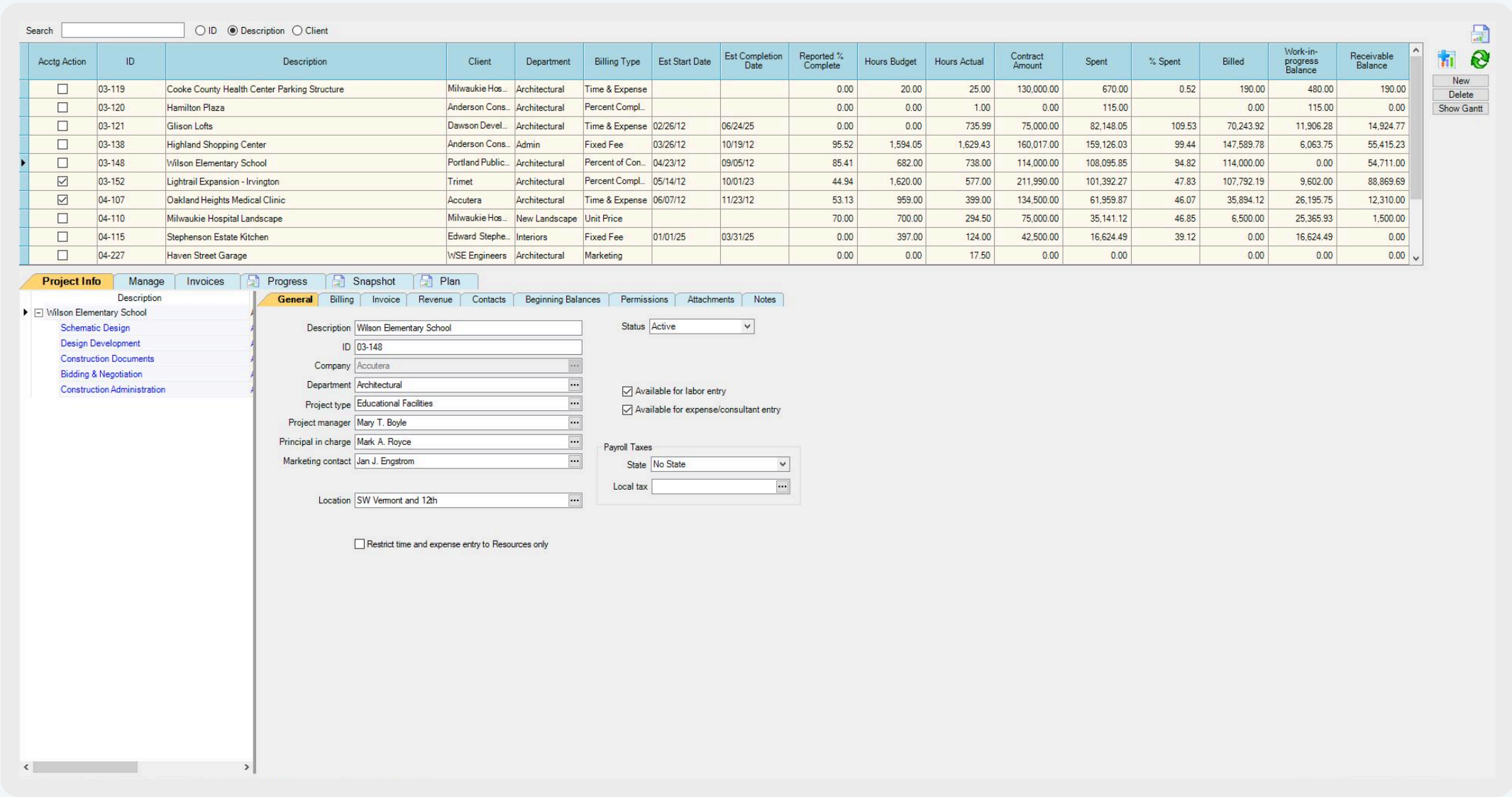
Designed for users who care about design

BQE CORE was designed by architects and engineers for architects and engineers, ensuring it enhances the way your firm operates. Unlike Ajera’s outdated interface, CORE features a modern design that reflects the creativity of its users. Its clean UI, beautiful data visualizations, and intuitive workflows make project and financial management effortless, while smart visual hierarchy and customizable dashboards provide instant clarity. There’s no endless clicking or coding expertise required. Ajera was designed for accountants while CORE helps your whole firm (but is also better for your accountants). With a seamless experience across desktop and mobile, CORE eliminates clunky menus and rigid processes, helping your entire team work faster, smarter, and with confidence.

Get a Customized Live Demo



BQE Core Project Center Screenshot



Deltek Ajera Project Command Center Screenshot